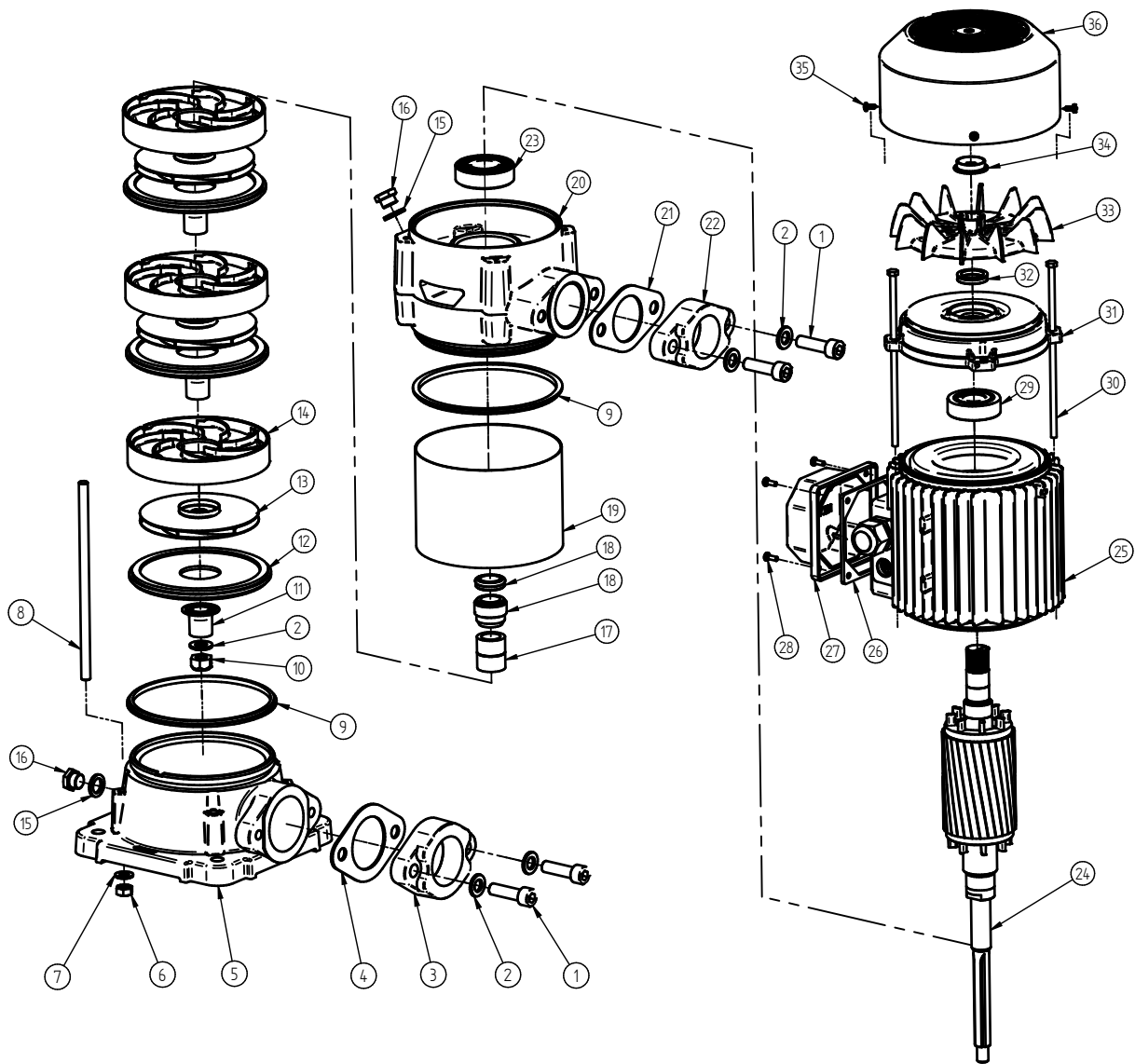


V-NOX 300 - V-NOX 400



ESPAÑOL DESCRIPCIÓN	ENGLISH DESCRIPTION	FRANÇAIS DESCRIPTION
1 TORNILLO CONTRABRIDA M10x40	1 COUNTER-FLANGE BOLT M10x40	1 VIS CONTRE-BRIDE M10x40
2 ARANDELA CONTRABRIDA M10	2 COUNTER-FLANGE WASHER M10	2 RONDELLE CONTRE-BRIDE M10
3 CONTRABRIDA ASPIRACIÓN 1 1/2"	3 COUNTER-FLANGE SUCTION 1 1/2 "	3 CONTREBRIDE ASPIRATION 1 1/2 "
4 JUNTA CONTRABRIDA ASP 1 1/2"	4 COUNTER-FLANGE SEAL ASP. 1 1/2 "	4 JOINT CONTRE-BRIDE ASP. 1 1/2 "
5 BASE ASPIRACIÓN	5 SUCTION BASE	5 BASE ASPIRATION
6 TUERCA TIRANTE M8	6 TIE NUT M8	6 ÉCROU TIRANT M8
7 ARANDELA TIRANTE M8	7 TIE WASHER M8	7 RONDELLE TIRANT M8
8 TIRANTE BOMBA	8 PUMP TIE	8 TIRANT POMPE
9 JUNTA CAMISA	9 SHIRT SEAL	9 JOINT CHEMISE
10 TUERCA EJE M10 AUTOBLOC. A2	10 SHAFT NUT M10 SELF-LOCKING A2	10 ÉCROU ARBRE M10 AUTOBL. A2
11 DISTANCIADOR NORYL	11 NORYL SPACER	11 ENTRETOISE NORYL
12 TAPA DIFUSOR	12 DIFFUSER COVER	12 COUVERCLE DIFFUSEUR
13 TURBINA INOX	13 STAINLESS STEEL TURBINE	13 TURBINE INOX
14 DIFUSOR SIN TAPA	14 DIFFUSER WITHOUT COVER	14 DIFFUSEUR SANS COUVERCLE
15 ARANDELA TORNILLO CEBADO	15 PRIMING BOLT WASHER	15 RONDELLE VIS AMORÇAGE
16 TORNILLO CEBADO 1/4 "	16 PRIMING BOLT 1/4 "	16 VIS AMORÇAGE 1/4 "
17 DISTANCIADOR SELLO V-NOX	17 STAMP SPACER V-NOX	17 ENTRETOISE ESTAMPILLE V-NOX
18 SELLO MEC. 17	18 MECH. STAMP 17	18 ESTAMPILLE MÉC. 17
19 CAMISA INOX PULIDA	19 POLISHED STAINLESS STEEL SHIRT	19 CHEMISE INOX POLI
20 CUERPO IMPULSIÓN	20 DRIVE HOUSING	20 CORPS IMPULSION
21 JUNTA CONTRABRIDA IMP. 1 1/4 "	21 DR. COUNTER-FLANGE SEAL 1 1/4 "	21 JOINT CONTRE-BRIDE IMPUL. 1 1/4 "
22 CONTRABRIDA IMPULSIÓN 1 1/4 "	22 DRIVE COUNTER-FLANGE 1 1/4 "	22 CONTRE-BRIDE IMPULSION 1 1/4 "
23 RODAMIENTO INFERIOR	23 LOWER BEARING	23 ROULEMENT INFÉRIEUR
24 ROTOR CON EJE	24 ROTOR WITH SHAFT	24 ROTOR AVEC AXE
25 ESTATOR CON CARCASA	25 STATOR WITH HOUSING	25 STATOR AVEC CARCASSE
26 JUNTA TAPA BORNES	26 TERMINAL COVER SEAL	26 JOINT CACHE BORNES
27 TAPA BORNES	27 TERMINAL COVER	27 CACHE BORNES
28 TORNILLO TAPA BORNES	28 TERMINAL COVER BOLT	28 VIS CACHE BORNES
29 RODAMIENTO SUPERIOR	29 UPPER BEARING	29 ROULEMENT SUPÉRIEUR
30 TENSOR V-NOX	30 TENSIONER SCREW V-NOX	30 VIS DE TENSION V-NOX
31 TAPA TRASERA MOTOR	31 MOTOR REAR COVER	31 CAPOT ARRIÈRE MOTEUR
32 RETEN IP55	32 SEAL IP55	32 BAGUE ANTIFUITE IP55
33 VENTILADOR	33 FAN	33 VENTILATEUR
34 ANILLO VENTILADOR	34 FAN FIXING RING	34 ANNEAU FIXATION VENTILATEUR
35 TORNILLO TAPA VENTILADOR	35 FAN COVER BOLT	35 VIS CAPOT VENTILATEUR
36 TAPA VENTILADOR	36 FAN COVER	36 CAPOT VENTILATEUR