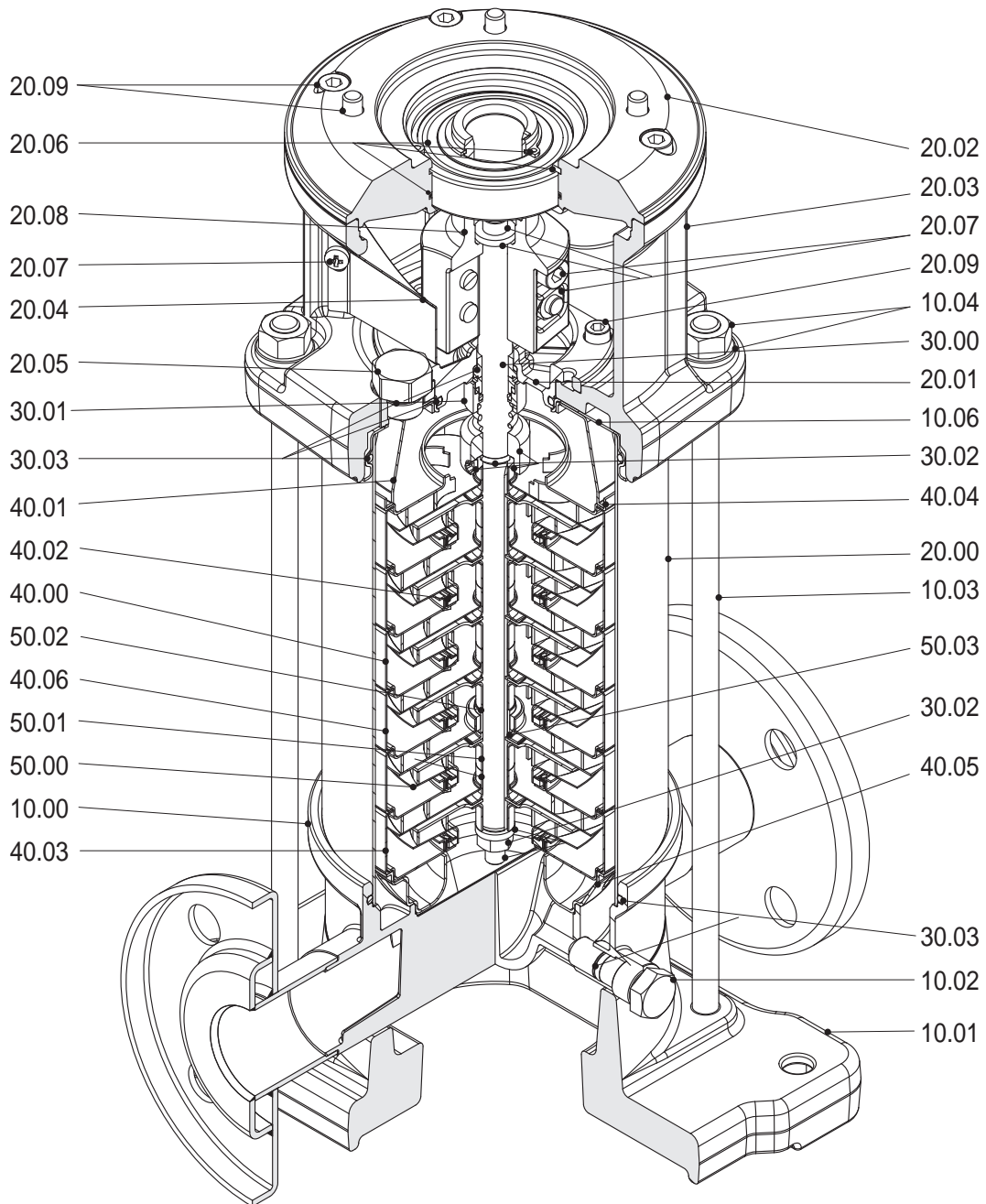
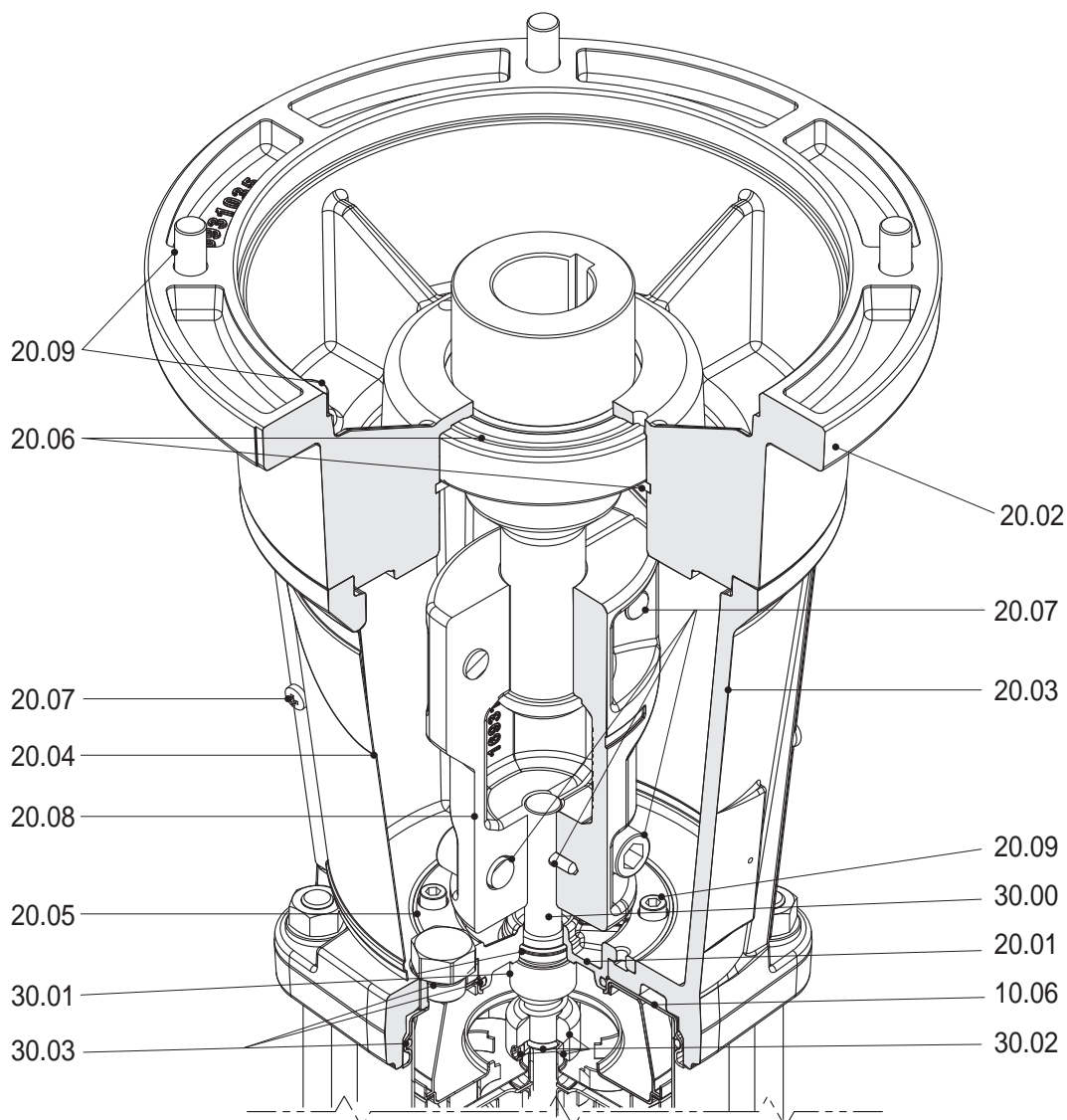


List of Main Components

SSV-F 1 - 3 - 6 - 10



(Configuration up to 4kW)



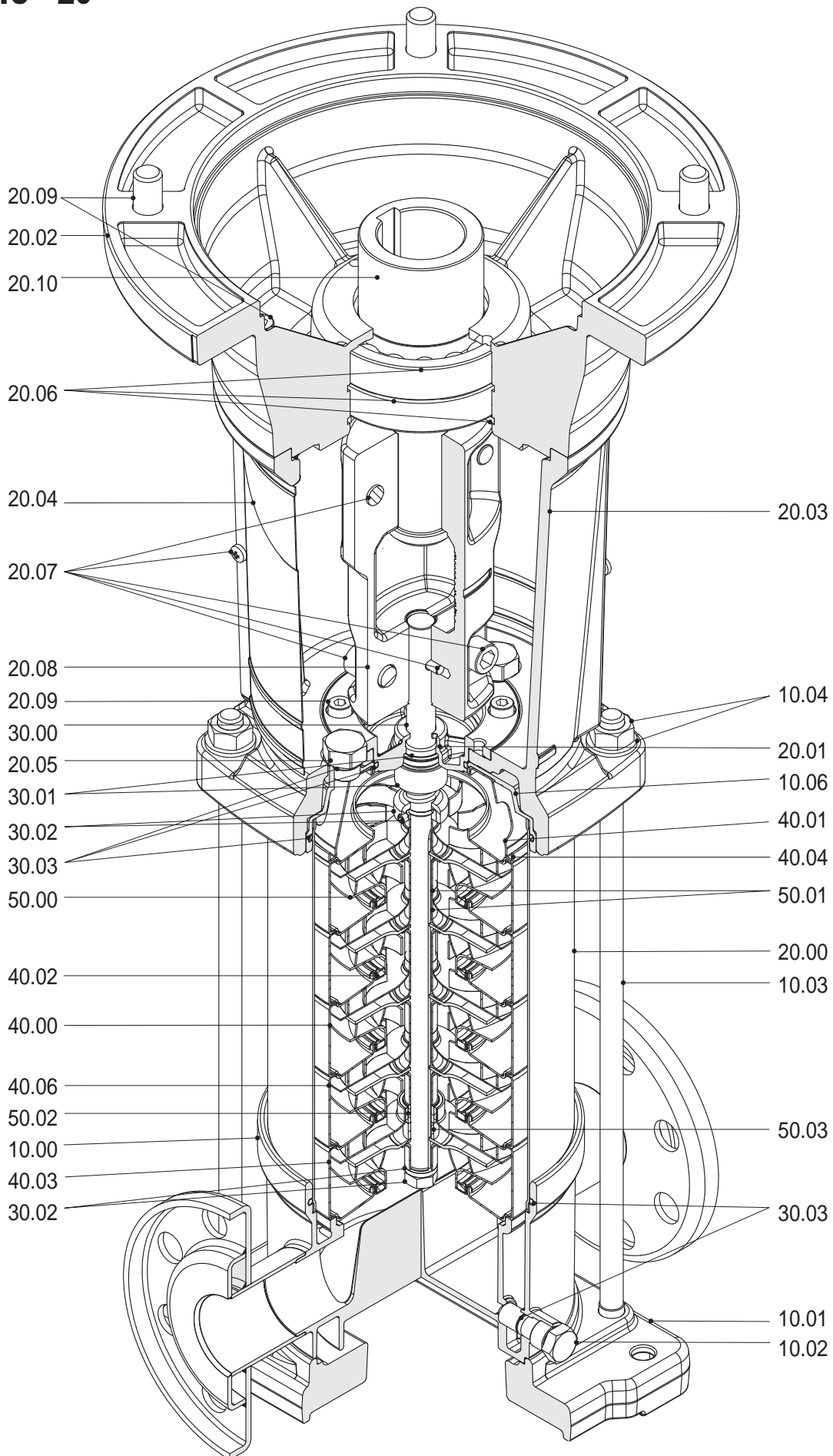
(Configuration from 5,5kW)

N. rif.	Description
10.00	Pump casing
10.01	Pump fixing plate
10.02	Filling and draining plug
10.03	Tie bolt
10.04	Kit nuts and washers
10.06	Upper flange
20.00	Outer Case
20.01	Mechanical seal housing
20.02	Motor flange
20.03	Motor bracket
20.04	Coupling guard
20.05	Filling plugs
20.06	Circlips and bearings, and O-ring
20.07	Coupling fasteners
20.08	Coupling
20.09	Kit motor screws

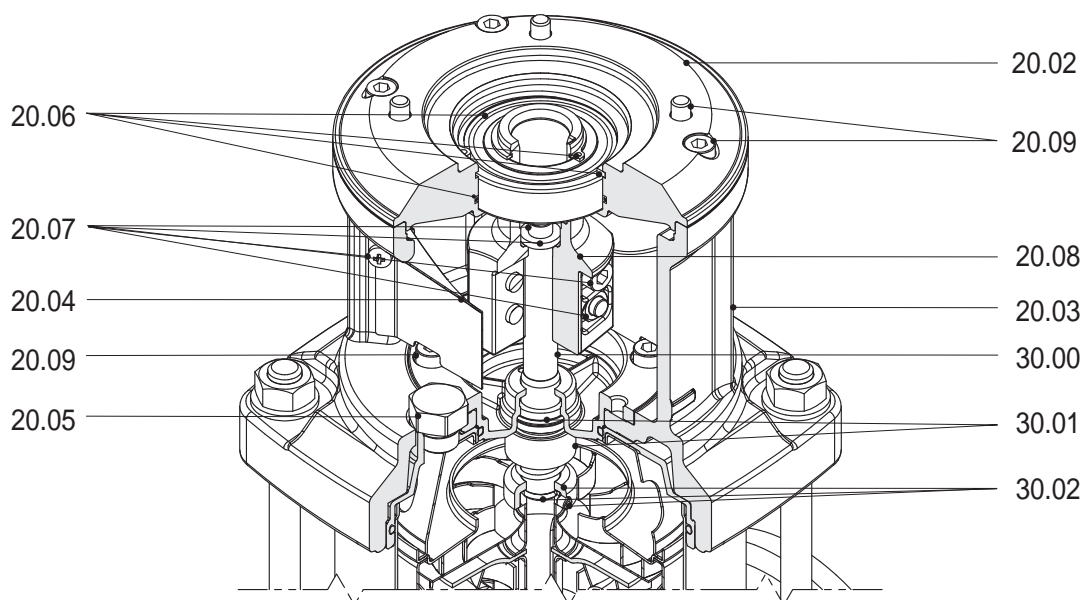
N. rif.	Description
30.00	Pump shaft
30.01	Kit Mechanical seal
30.02	Mechanical seal fastening kit
30.03	Kit O-rings
40.00	Stage housing and diffuser
40.01	Stage Centering outlet
40.02	Floating neck ring
40.03	Initial stage housing
40.04	Last Stage with diffuser
40.05	Stage Centering inlet
40.06	Stage housing and diffuser with bearing
50.00	Impeller
50.01	Impeller spacer
50.02	Intermediary sleeve
50.03	Intermediary sleeve spacer

List of Main Components

SSV-F 15 - 20



Configuration from 5,5kW



Configuration up to 4kW

N. rif.	Description
10.00	Pump casing
10.01	Pump fixing plate
10.02	Filling and draining plug
10.03	Tie bolt
10.04	Kit nuts and washers
10.06	Upper Flange
20.00	Outer Case
20.01	Mechanical seal housing
20.02	Motor flange
20.03	Motor bracket
20.04	Coupling guard
20.05	Filling plugs
20.06	Circlips and bearings, and O-ring
20.07	Coupling fasteners
20.08	Coupling
20.09	Kit motor screws

N. rif.	Description
20.10	Motor shaft adapter
30.00	Pump shaft
30.01	Kit Mechanical seal
30.02	Mechanical seal fastening kit
30.03	Kit O-rings
40.00	Stage housing and diffuser
40.01	Stage Centering outlet
40.02	Floating neck ring
40.03	Initial stage housing
40.04	Last Stage with diffuser
40.06	Stage housing and diffuser with bearing
50.00	Impeller
50.01	Impeller spacer
50.02	Intermediary sleeve
50.03	Intermediary sleeve spacer