

VERTICAL MULTISTAGE PUMPS

SSV-F 1 - 3 - 6 - 10 - 15

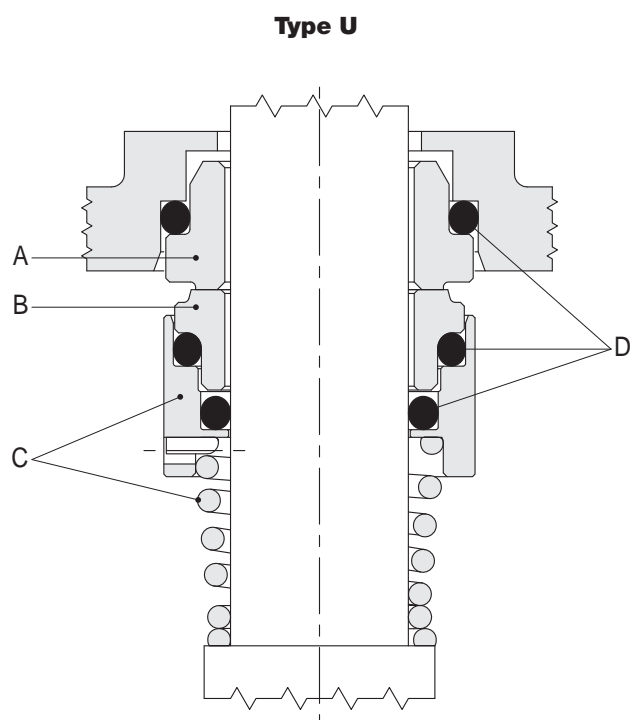
50Hz



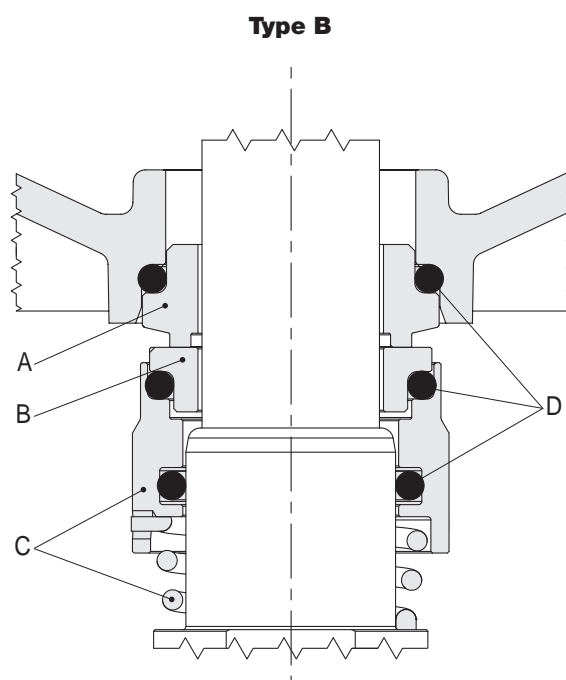
MATERIAL IN CONTACT WITH THE LIQUID						
Pos.	PARTS DESCRIPTIONS	Type	MATERIAL			
			I version		N version	
			ASTM/AISI	DIN / EN	ASTM/AISI	DIN / EN
10.00	Pump casing	Stainless Steel	CF 8 / AISI 304	1.4308	CF 8M / AISI 316	1.4408
10.02	Filling and draining plug	Stainless Steel	AISI 304	1.4301	AISI 316	1.4401
10.06	Upper flange	Stainless Steel	AISI 304	1.4301	AISI 316	1.4401
20.00	Outer Case	Stainless Steel	AISI 304	1.4301	AISI 316	1.4401
20.01	Mechanical seal housing	Stainless Steel	AISI 304	1.4301	AISI 316	1.4401
20.05	Filling plugs	Stainless Steel	AISI 304	1.4301	AISI 316	1.4401
30.00	Pump shaft	Stainless Steel	AISI 304	1.4301	AISI 316	1.4401
30.01	Kit Mechanical seal	Silicon Carbide SiC, Graphite, EPDM, Stainless Steel	-	-	-	-
30.02	Mechanical seal fastening kit	Stainless Steel	AISI 304	1.4301	AISI 316	1.4401
30.03	Kit O-rings	EPDM	-	-	-	-
40.00	Stage housing and diffuser	Stainless Steel	AISI 304	1.4301	AISI 316	1.4401
40.01	Stage Centering outlet	Stainless Steel	AISI 304	1.4301	AISI 316	1.4401
40.02	Floating neck ring	PPS	-	-	-	-
40.03	Initial stage housing	Stainless Steel	AISI 304	1.4301	AISI 316	1.4401
40.04	Last Stage with diffuser	Stainless Steel	AISI 304	1.4301	AISI 316	1.4401
40.05	Stage Centering inlet	Stainless Steel	AISI 304	1.4301	AISI 316	1.4401
40.06	Stage housing and diffuser with bearing	Stainless Steel / Tungsten Carbide	AISI 304	1.4301	AISI 316	1.4401
50.00	Impeller	Stainless Steel	AISI 304	1.4301	AISI 316	1.4401
50.01	Impeller spacer	Stainless Steel	AISI 304	1.4301	AISI 316	1.4401
50.02	Intermediary sleeve	Tungsten Carbide	-	-	-	-
50.03	Intermediary sleeve spacer	Stainless Steel	AISI 304	1.4301	AISI 316	1.4401

Mechanical seal specifications

(in accordance with EN 12756)



00114085 09/2012



00114115 02/2015

Standard version

Model	Type				Position				Temperature
					A Stationary part	B Rotating part	C Other components	D Elastomers	
E1	B	Q	G	E	Graphite	Silicon carbide	AISI 316	EPDM	-30°C +120°C

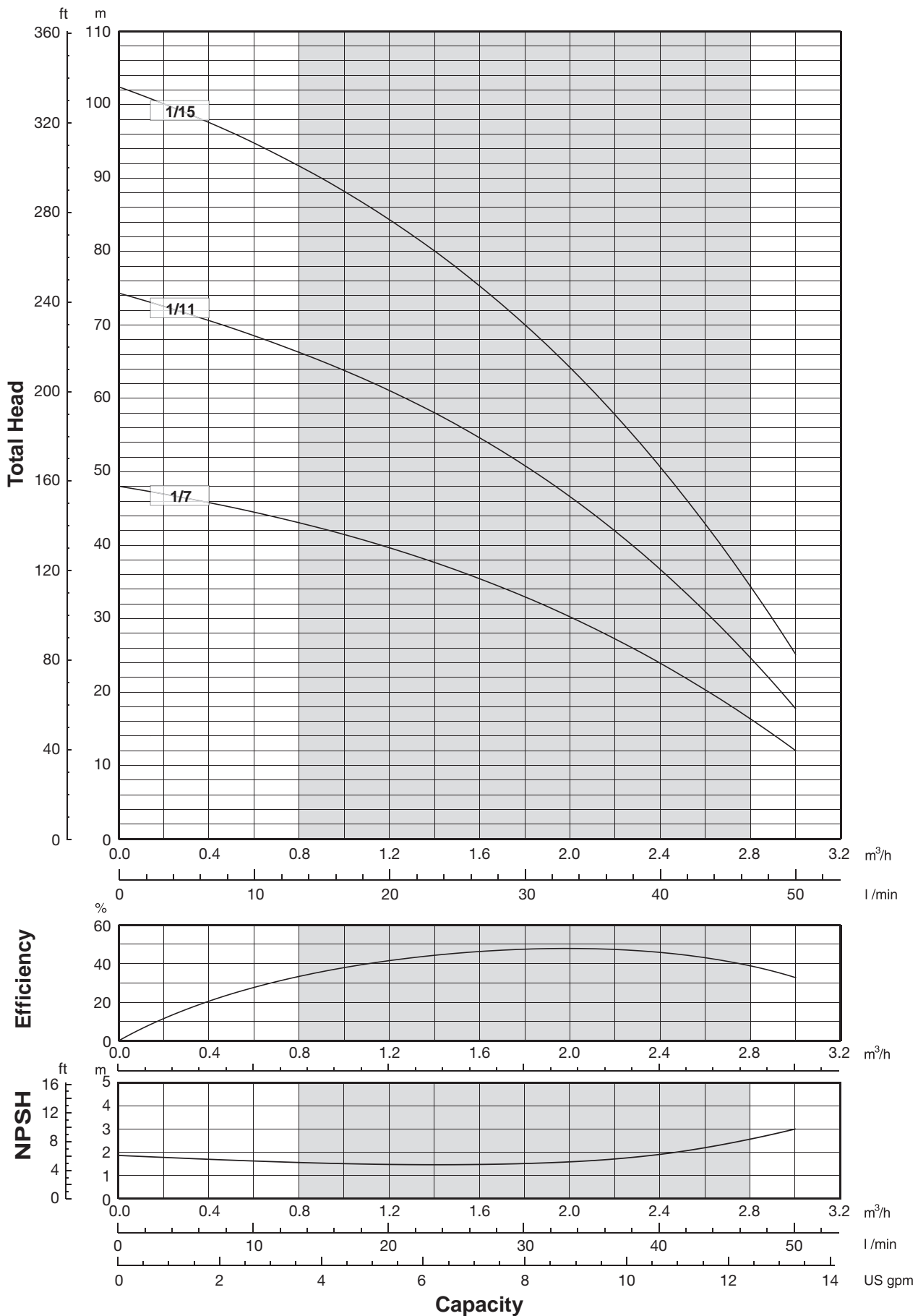
Available on request

Model	Type				Position				Temperature (°C)
					A Stationary part	B Rotating part	C Other components	D Elastomers	
E2	Q	Q	G	E	Silicon carbide	Silicon carbide	AISI 316	EPDM	-10°C +120°C
V3	Q	Q	G	V	Silicon carbide	Silicon carbide	AISI 316	FKM	-10°C +120°C
V4	B	Q	G	V	Graphite	Silicon carbide	AISI 316	FKM	-10°C +120°C
E5	U	U	G	E	Tungsten carbide	Tungsten carbide	AISI 316	EPDM	-10°C +120°C

Type	Material
B	Graphite
E	EPDM
G	AISI 316
Q	Silicon carbide
V	FKM
U	Tungsten carbide

Performance curves 50Hz

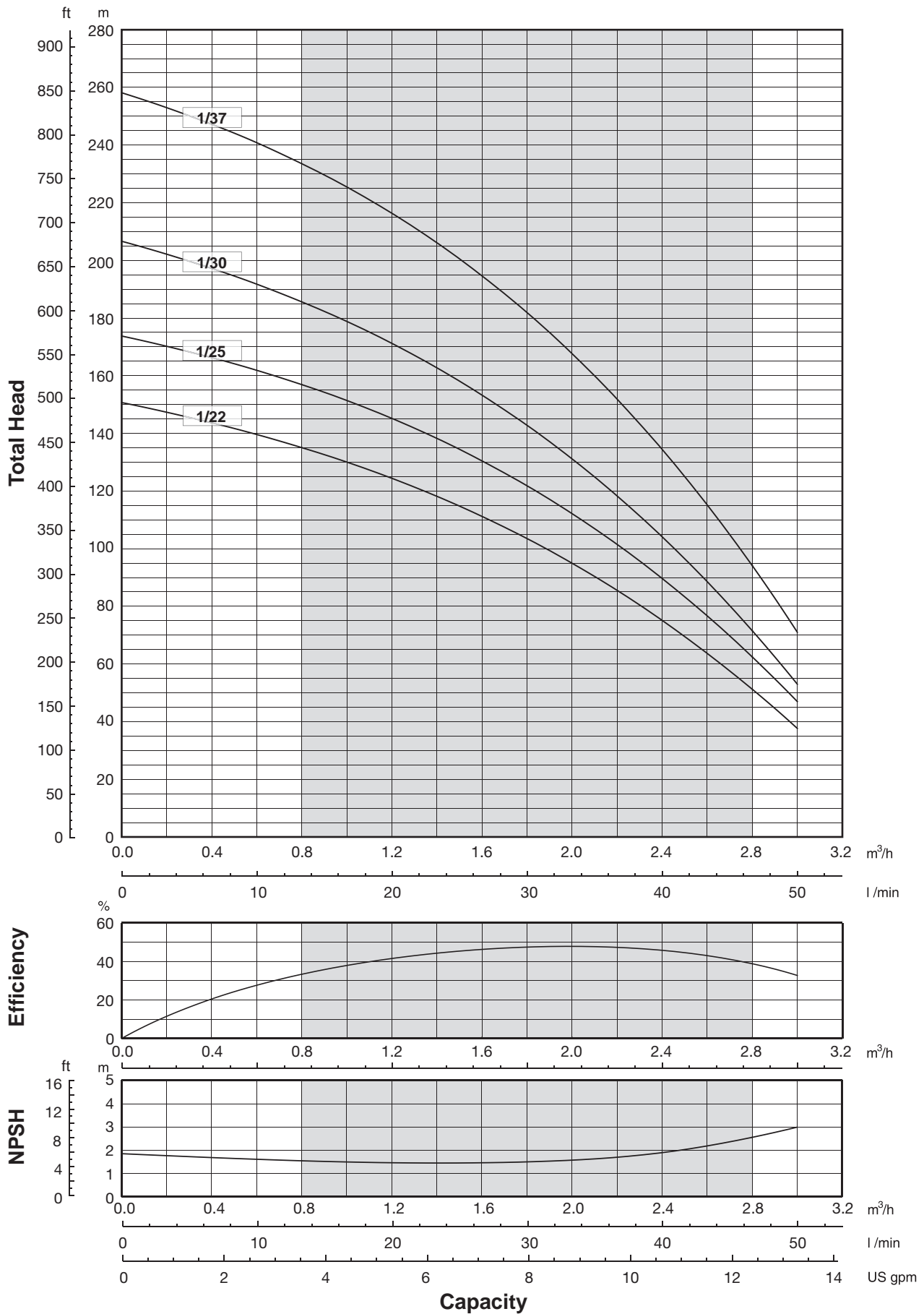
MEI ≥ 0,70



The hydraulic characteristics are guaranteed, according to ISO standard 9906:2012, grade 3B

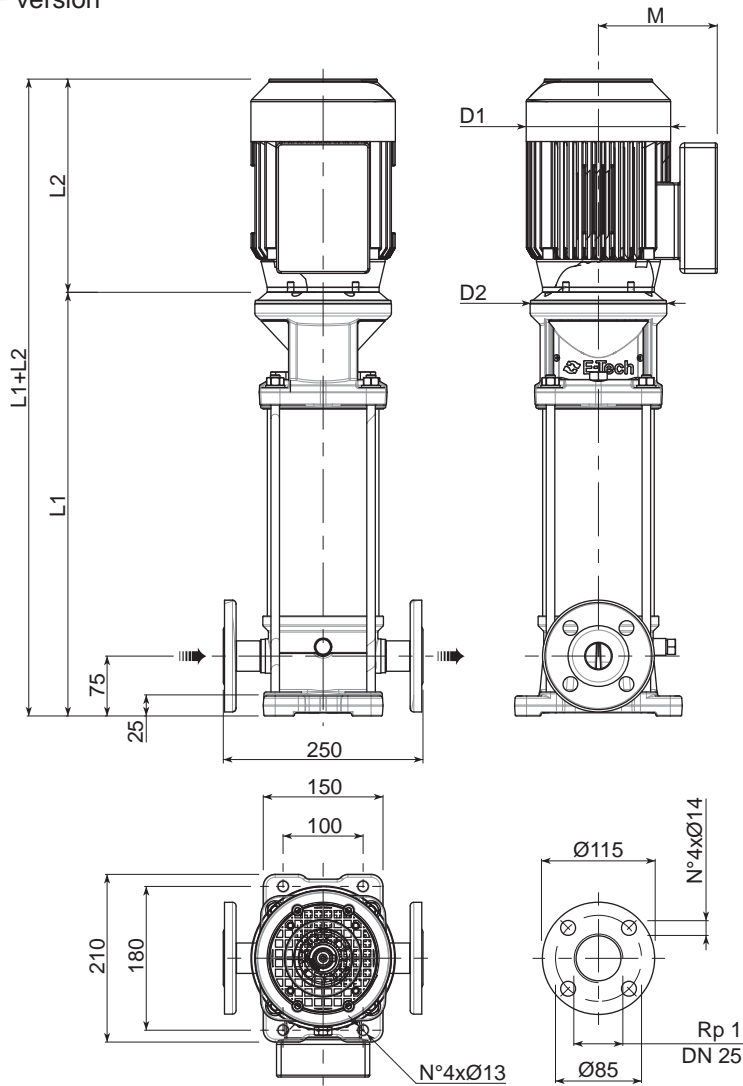
Performance curves 50Hz

MEI ≥ 0,70



The hydraulic characteristics are guaranteed, according to ISO standard 9906:2012, grade 3B

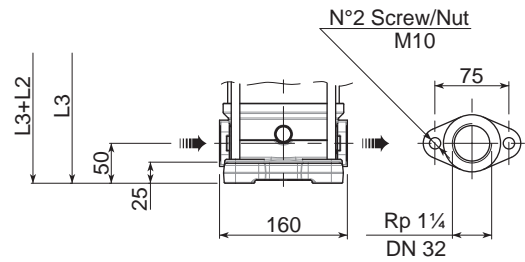
F version



F version Round flanges on body type PN25: the pump is supplied without counterflanges (Optional accessories, including bolts and joints).

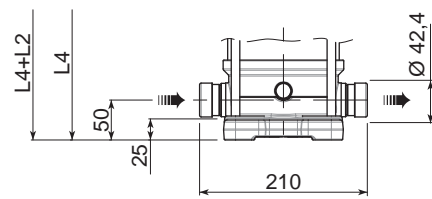
T version

Available from EV1/2 to EV1/23



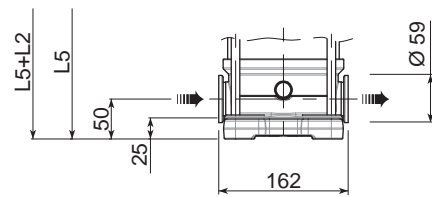
T version Oval flanges on body type PN16: the pump is supplied without threaded oval counter flanges (Optional accessories, including bolts and joints).

V version



V version Connections with rapid fittings type "Victaulic": the pump is supplied without the collars (Optional accessories).

C version



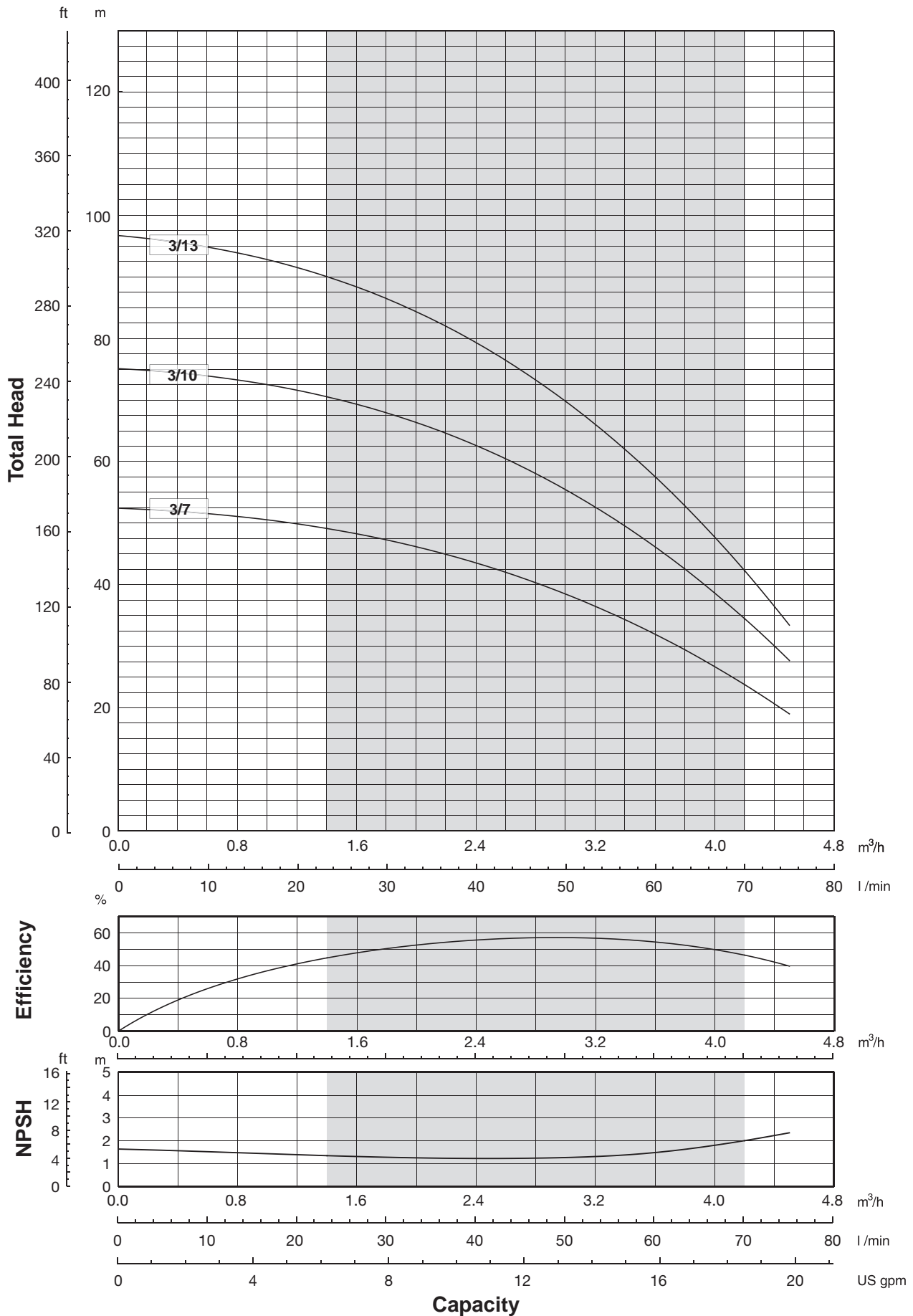
C version Connections with round fittings type Clamp-FlexiClamp: the pump is supplied without collars (Optional accessories).

0011401411 02/2015

Pump Model	Motor		Dimensions (mm)											Weight (kg)	
	kW	Dim	L1 F	L2 1-PHASE	L2 3-PHASE	L3 T	L4 V	L5 C	M 1-PHASE	M 3-PHASE	D1 1-PHASE	D1 3-PHASE	D2	Pump	Electric Pump
1/7	0,37	71	425	215	215	400	400	400	129	112	142	142	170	17	22,8
1/11	0,55	71	515	215	215	490	490	490	129	112	142	142	170	19	25,2
1/15	0,75	80	605	232	232	580	580	580	150	129	160	160	170	21	30,5
1/22	1,1	80	762,5	232	232	737,5	737,5	737,5	150	129	160	160	170	24	35,1
1/25	1,5	90	840	267	267	-	815	815	160	138	180	180	170	26	40
1/30	1,5	90	952,5	267	267	-	927,5	927,5	160	138	180	180	170	28,5	42,5
1/37	2,2	90	1110	267	267	-	1085	1085	160	138	180	180	170	31,5	47,5

Performance curves 50Hz

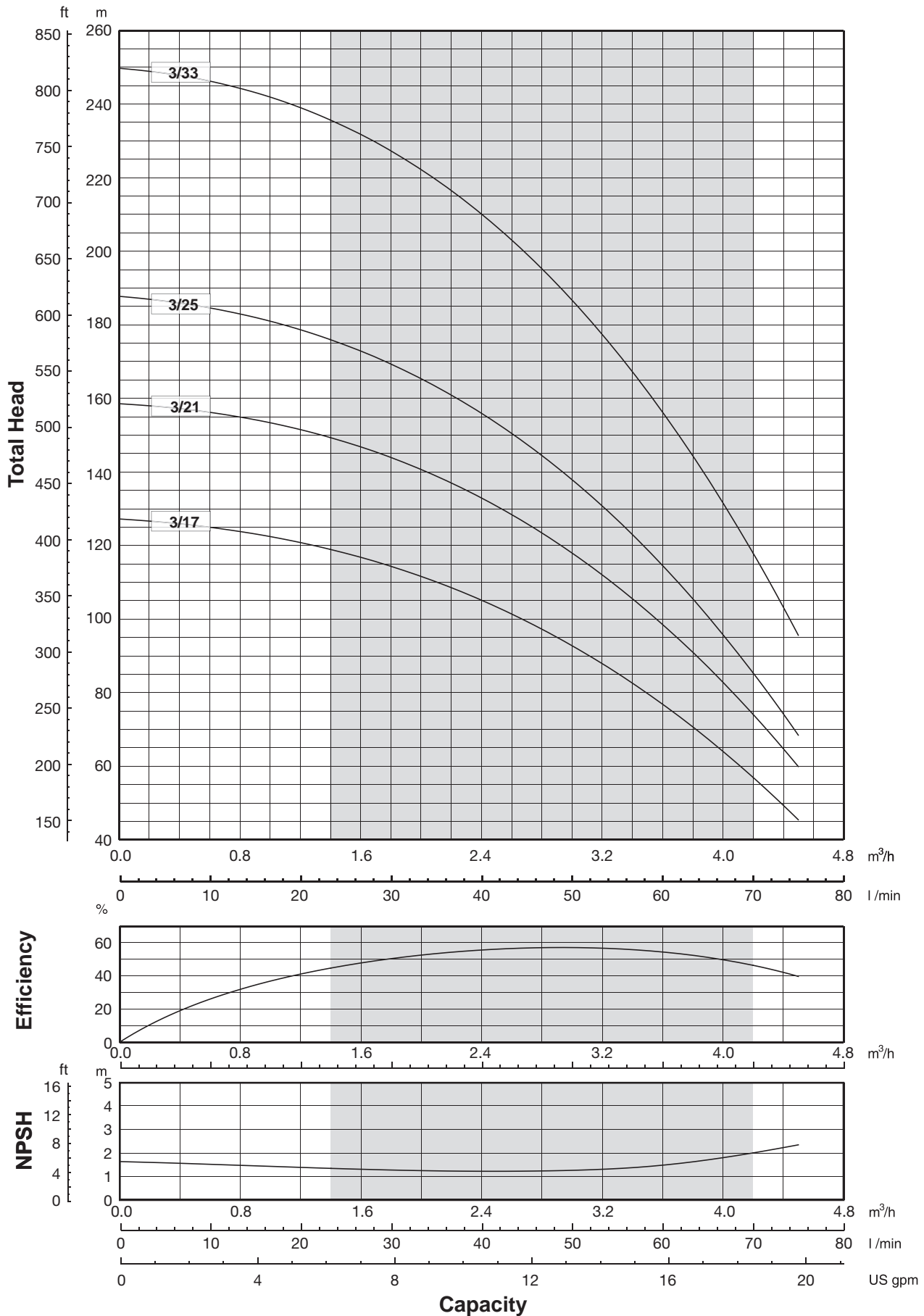
MEI ≥ 0,70



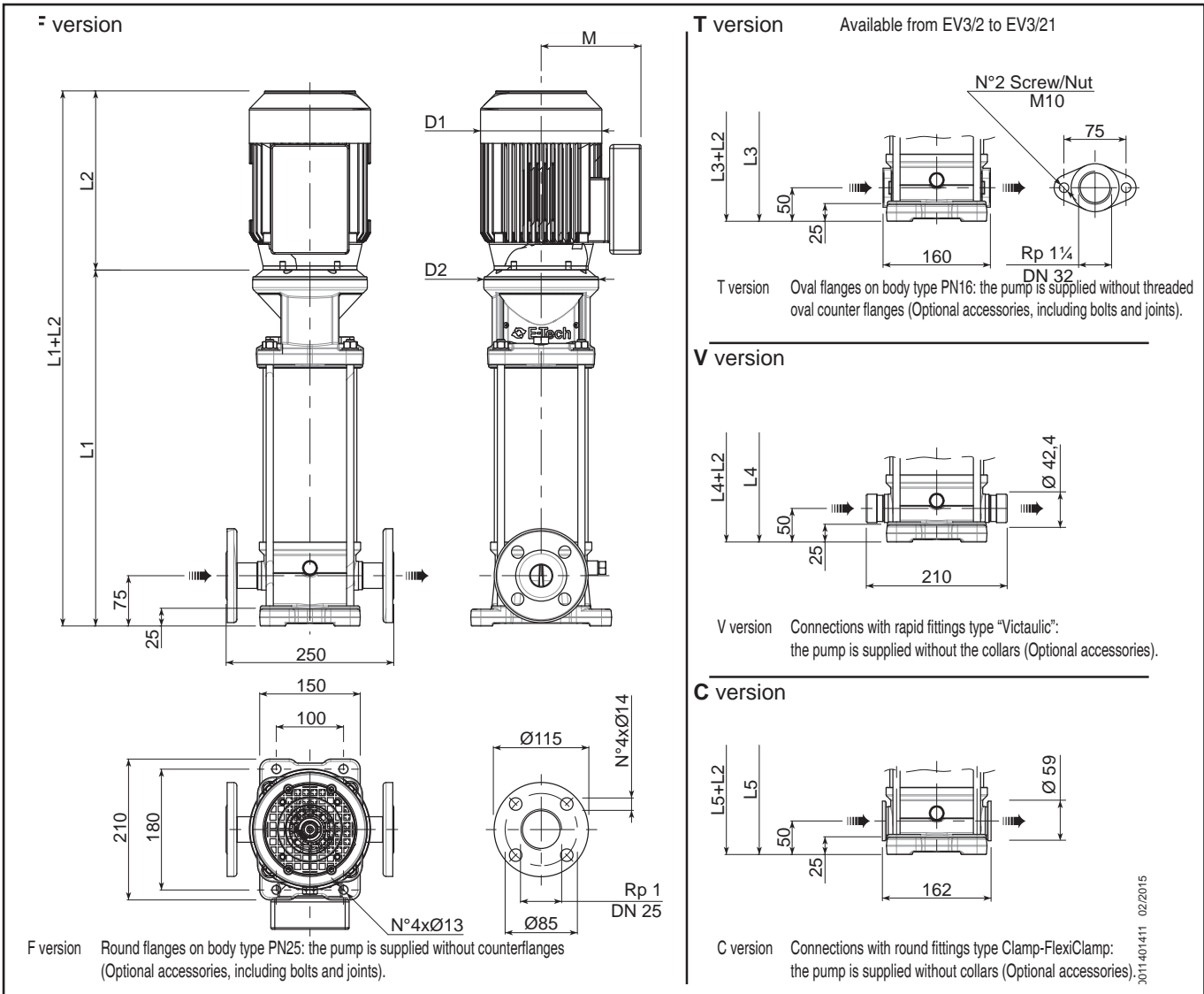
The hydraulic characteristics are guaranteed, according to ISO standard 9906:2012, grade 3B

Performance curves 50Hz

MEI ≥ 0,70



The hydraulic characteristics are guaranteed, according to ISO standard 9906:2012, grade 3B



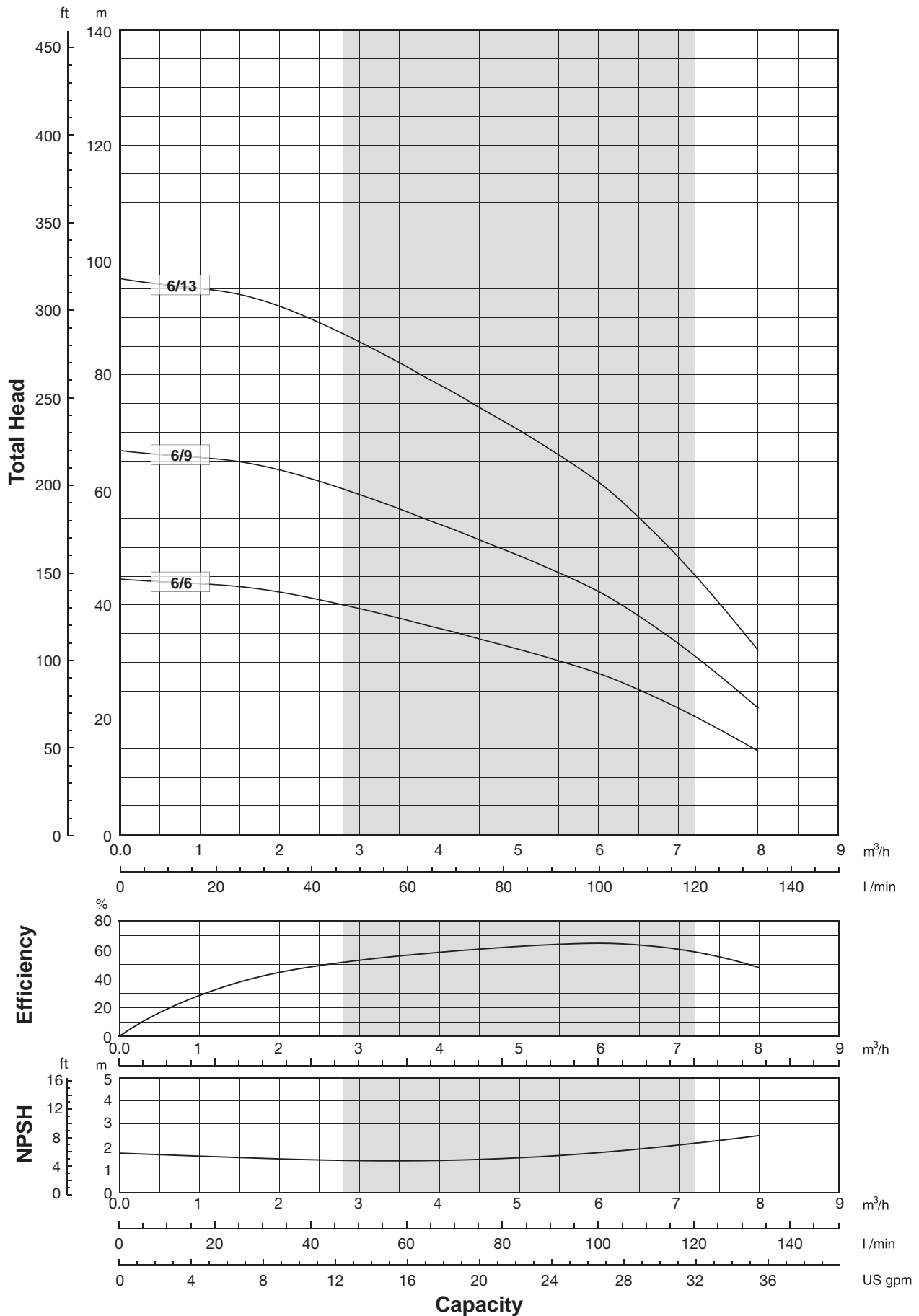
3011401411 02/2015

Pump Model	Motor		Dimensions (mm)									Weight (kg)			
	kW	Dim	L1 F	L2 1-PHASE	L2 3-PHASE	L3 T	L4 V	L5 C	M 1-PHASE	M 3-PHASE	D1 1-PHASE	D1 3-PHASE	D2	Pump	Electric Pump
3/7	0,75	80	425	232	232	400	400	400	150	129	160	160	170	17	26,5
3/10	1,1	80	492,5	232	232	467,5	467,5	467,5	150	129	160	160	170	18,5	29,6
3/13	1,1	80	560	232	232	535	535	535	150	129	160	160	170	20	31,1
3/17	1,5	90	660	267	267	635	635	635	160	138	180	180	170	22,5	36,5
3/21	2,2	90	750	267	267	725	725	725	160	138	180	180	170	24	40
3/25	2,2	90	840	267	267	-	815	815	160	138	180	180	170	26	42
3/33	3	100	1030	-	290	-	1005	1005	-	138	-	180	170	30,5	48,5

SSV-F 6

Performance curves 50Hz

MEI ≥ 0,70

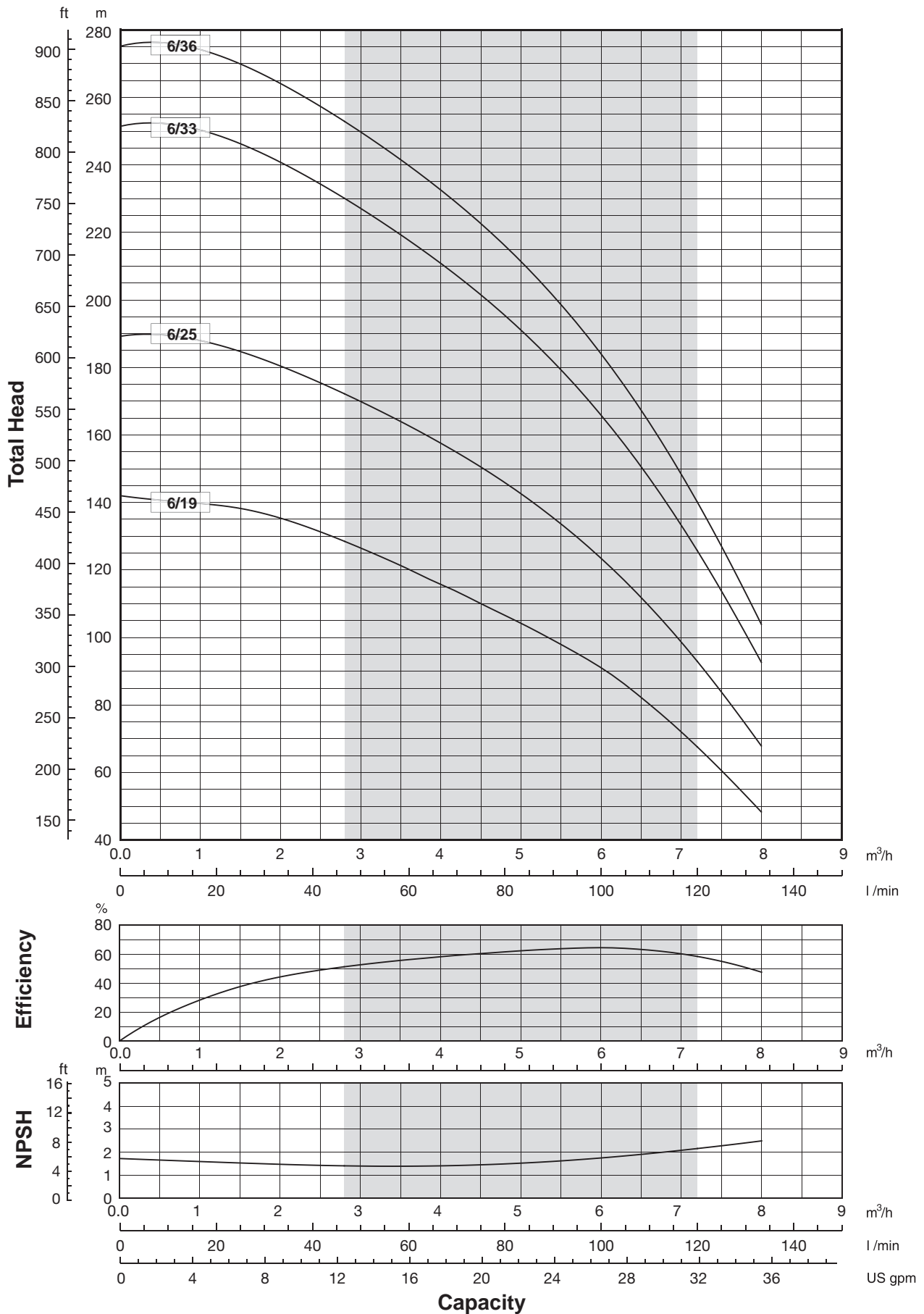


The hydraulic characteristics are guaranteed, according to ISO standard 9906:2012, grade 3B

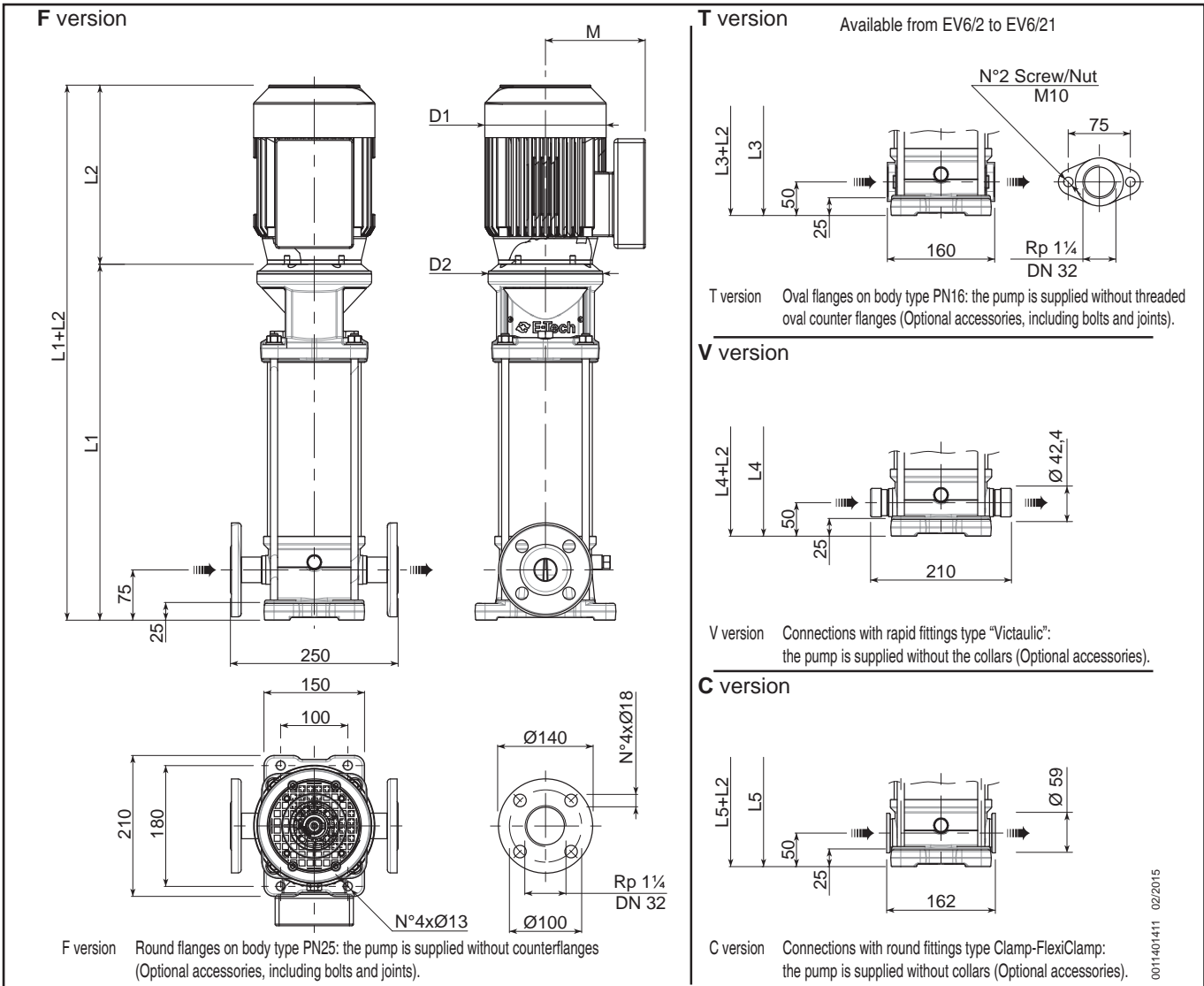
SSV-F 6

Performance curves 50Hz

MEI ≥ 0,70



The hydraulic characteristics are guaranteed, according to ISO standard 9906:2012, grade 3B



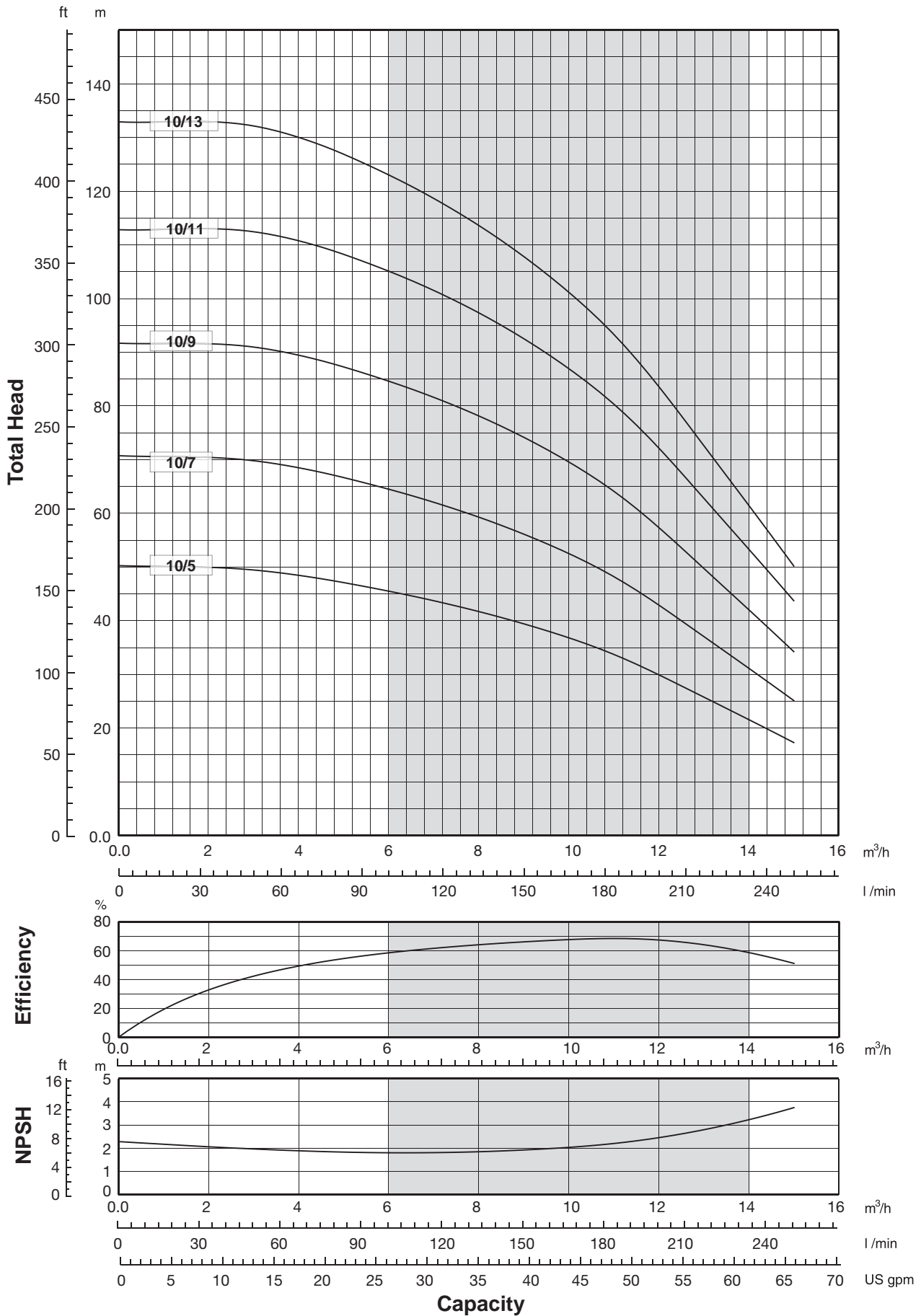
0011401411 02/2015

Pump Model	Motor		Dimensions (mm)									Weight (kg)			
	kW	Dim	L1 F	L2 1-PHASE	L2 3-PHASE	L3 T	L4 V	L5 C	M 1-PHASE	M 3-PHASE	D1 1-PHASE	D1 3-PHASE	D2	Pump	Electric Pump
6/6	0,75	80	423,5	232	232	398,5	398,5	398,5	150	129	160	160	170	17,5	27
6/9	1,1	80	501,5	232	232	476,5	476,5	476,5	150	129	160	160	170	19	30,1
6/13	1,5	90	615,5	267	267	590,5	590,5	590,5	160	138	180	180	170	21,5	35,5
6/19	2,2	90	771,5	267	267	746,5	746,5	746,5	160	138	180	180	170	24,5	40,5
6/25	3	100	937,5	-	290	-	912,5	912,5	-	138	-	180	170	28,5	46,5
6/33	4	112	1145,5	-	306	-	1120,5	1120,5	-	145	-	196	170	32,5	59
6/36	5,5	132	-	-	328	-	1374	-	-	160	-	225	300	53,5	87,1

SSV-F 10

Performance curves 50Hz

MEI ≥ 0,70

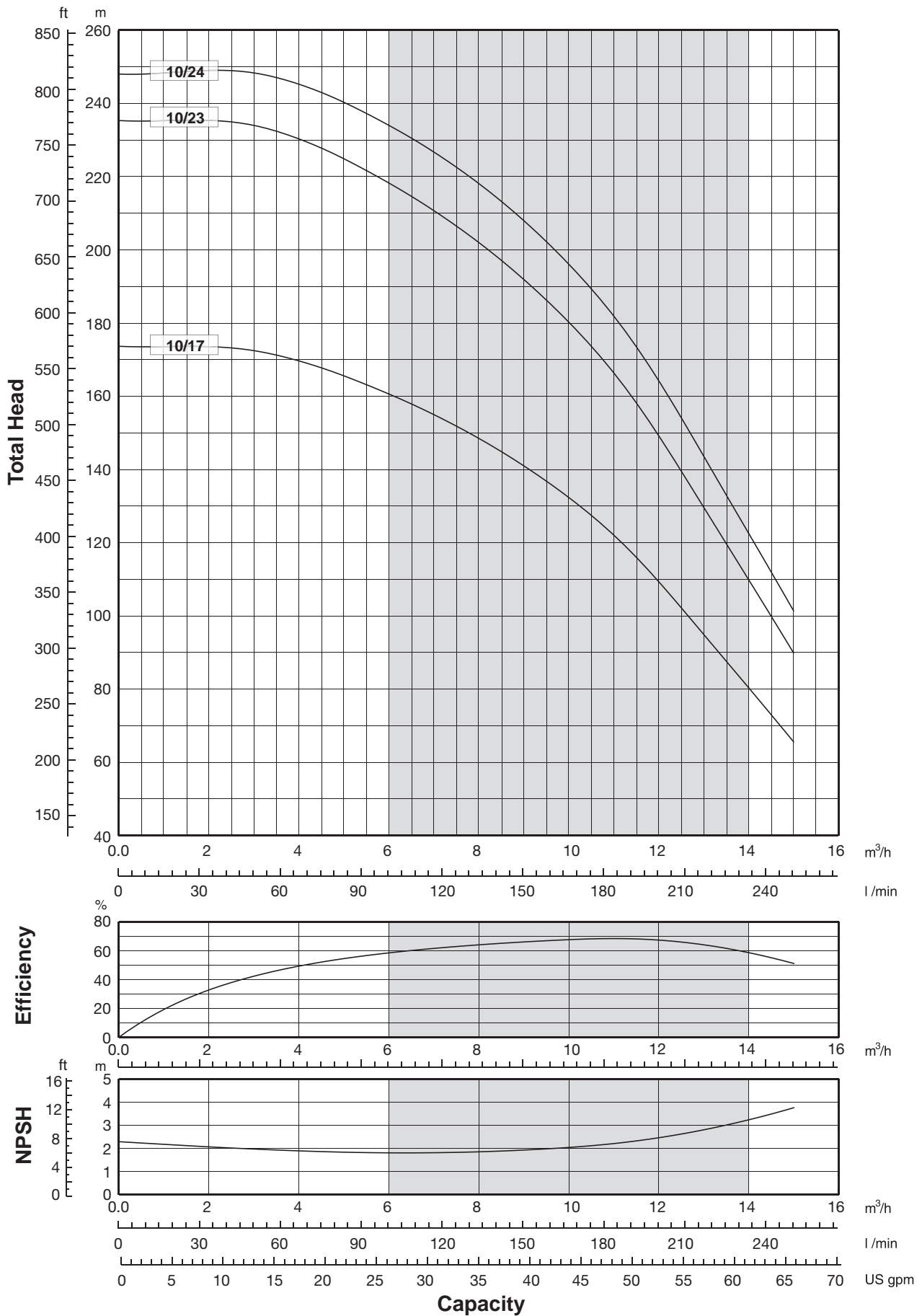


The hydraulic characteristics are guaranteed, according to ISO standard 9906:2012, grade 3B

SSV-F 10

Performance curves 50Hz

MEI ≥ 0,70

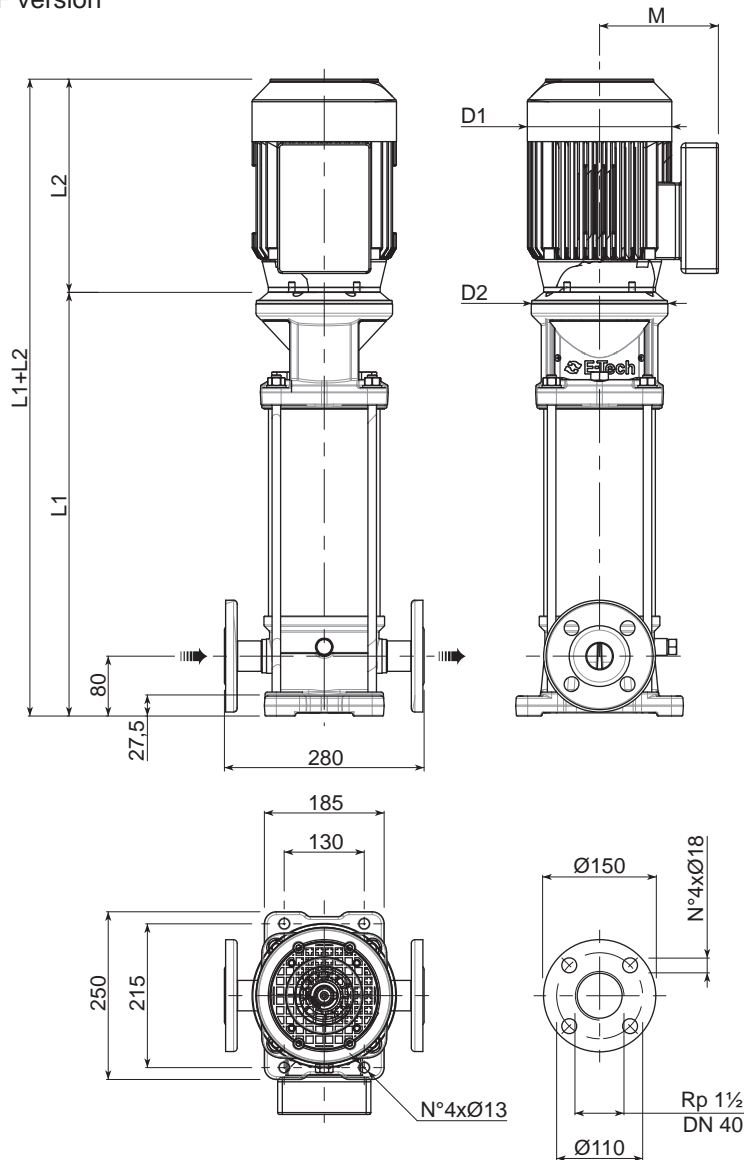


The hydraulic characteristics are guaranteed, according to ISO standard 9906:2012, grade 3B

SSV-F 10

Technical data 50Hz

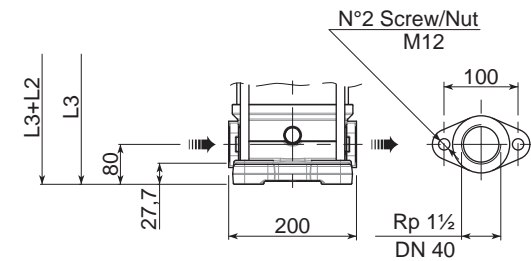
F version



F version Round flanges on body type PN25: the pump is supplied without counterflanges (Optional accessories, including bolts and joints).

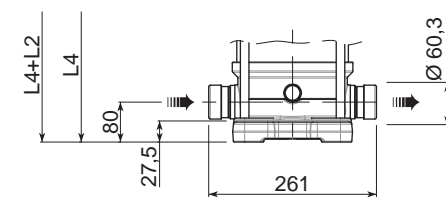
T version

Available from EV10/2 to EV10/15



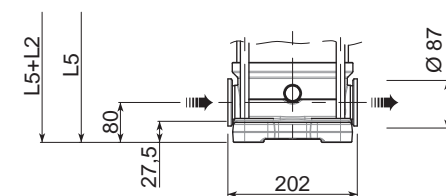
T version Oval flanges on body type PN16: the pump is supplied without threaded oval counter flanges (Optional accessories, including bolts and joints).

V version



V version Connections with rapid fittings type "Victaulic": the pump is supplied without the collars (Optional accessories).

C version



C version Connections with round fittings type Clamp-FlexiClamp: the pump is supplied without collars (Optional accessories).

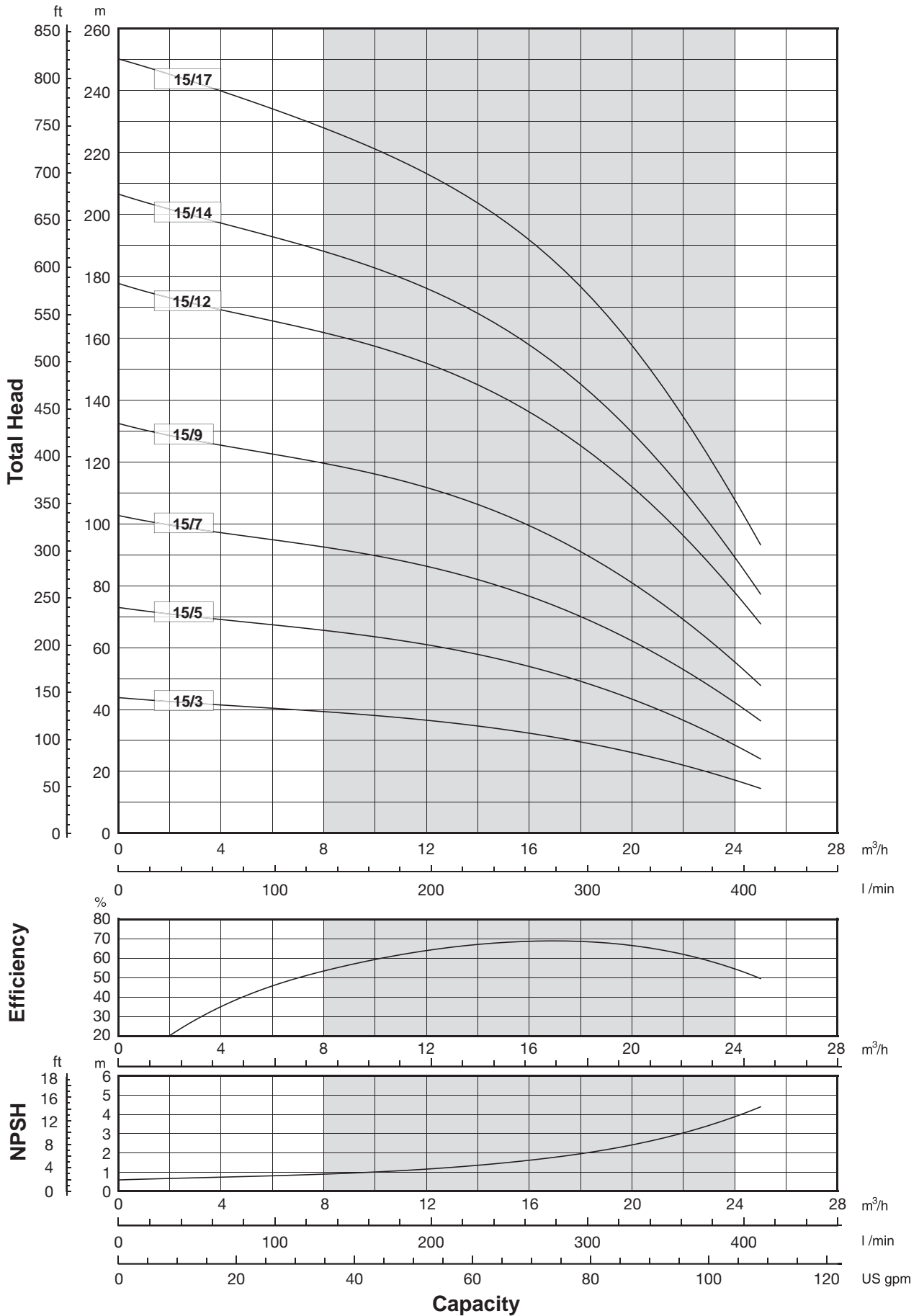
0011401411 02/2015

Pump Model	Motor		L1 F	L2		L3 T	Dimensions (mm)			M	D1		D2	Weight (kg)	
	kW	Dim		1-PHASE	3-PHASE		L4 V	L5 C	1-PHASE		3-PHASE	1-PHASE		3-PHASE	Pump
10/5	1,5	90	447,5	267	267	447,5	447,5	447,5	160	138	180	180	170	20	34
10/7	2,2	90	507,5	267	267	507,5	507,5	507,5	160	138	180	180	170	21	37
10/9	3	100	577,5	-	290	577,5	577,5	577,5	-	138	-	180	170	23	41
10/11	4	112	637,5	-	306	637,5	637,5	637,5	-	145	-	196	170	24,5	51
10/13	4	112	697,5	-	306	697,5	697,5	697,5	-	145	-	196	170	26	52,5
10/17	5,5	132	993	-	328	-	993	993	-	161	-	225	300	48	81,6
10/23	7,5	132	1173	-	350	-	1173	1173	-	161	-	225	300	52	88
10/24	11	160	1223	-	425	-	1223	1223	-	198	-	248	350	55	114

SSV-F 15

Performance curves 50Hz

MEI ≥ 0,70

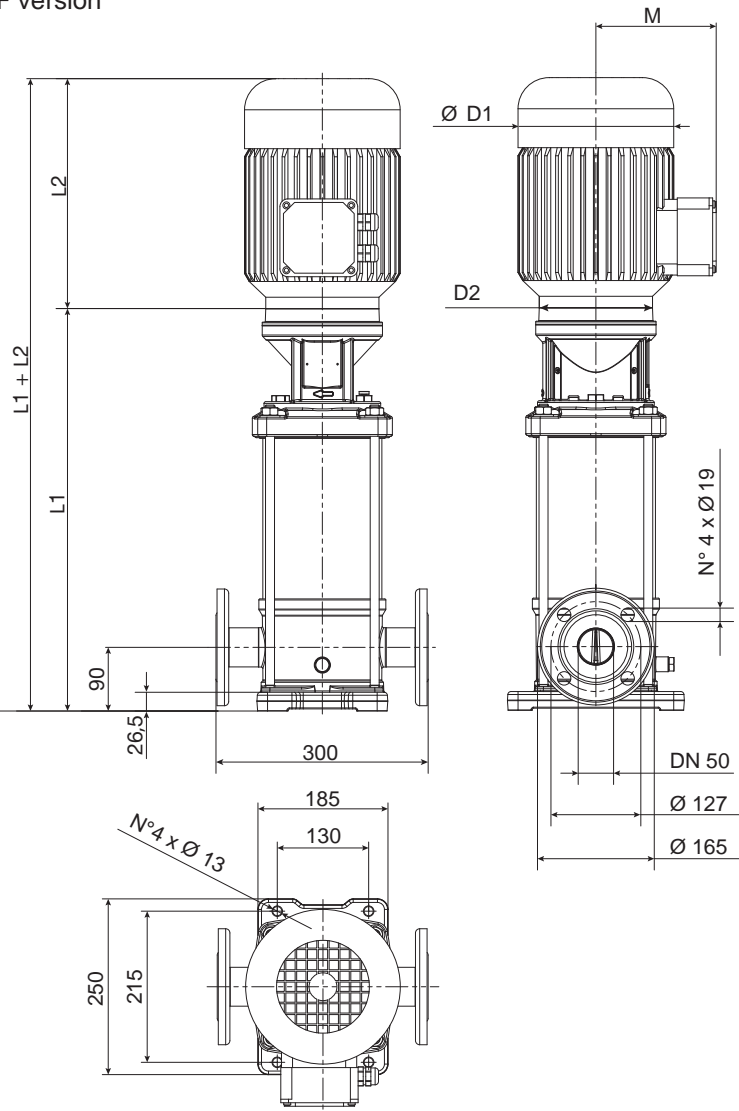


The hydraulic characteristics are guaranteed, according to ISO standard 9906:2012, grade 3B

SSV-F 15

Technical data 50Hz

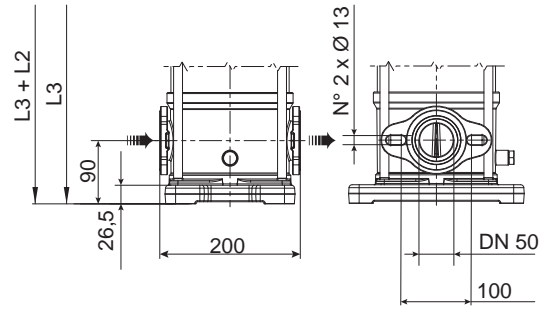
F version



F version Round flanges on body type PN25: the pump is supplied without counterflanges (Optional accessories, including bolts and joints).

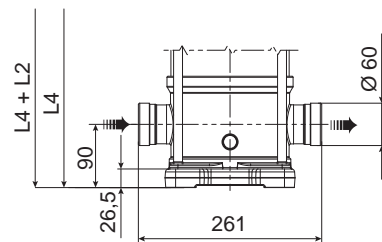
T version

Available from EV15/1 to EV15/10



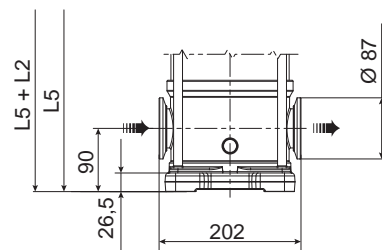
T version Oval flanges on body type PN16: the pump is supplied without threaded oval counter flanges (Optional accessories, including bolts and joints).

V version



V version Connections with rapid fittings type "Victaulic": the pump is supplied without the collars (Optional accessories).

C version



C version Connections with round fittings type Clamp-FlexiClamp: the pump is supplied without collars (Optional accessories).

00114095 05/2014

Pump Model	Motor		Dimensions (mm)									Weight (kg)			
	kW	Dim	L1 F	L2 1-PHASE	L2 3-PHASE	L3 T	L4 V	L5 C	M 1-PHASE	M 3-PHASE	D1 1-PHASE	D1 3-PHASE	D2	Pump	Electric Pump
15/3	3	100	473	-	267	473	473	473	-	138	-	180	170	27	45,7
15/5	4	112	569	-	306	569	569	569	-	145	-	196	170	30	52,8
15/7	5,5	132	852	-	328	852	852	852	-	161	-	225	300	53	87
15/9	7,5	132	948	-	350	948	948	948	-	161	-	225	300	56	92
15/12	11	160	1112	-	425	-	1112	1112	-	198	-	248	350	63	121
15/14	11	160	1208	-	425	-	1208	1208	-	198	-	248	350	66	124
15/17	15	160	1352	-	476	-	1352	1352	-	198	-	248	350	70	134