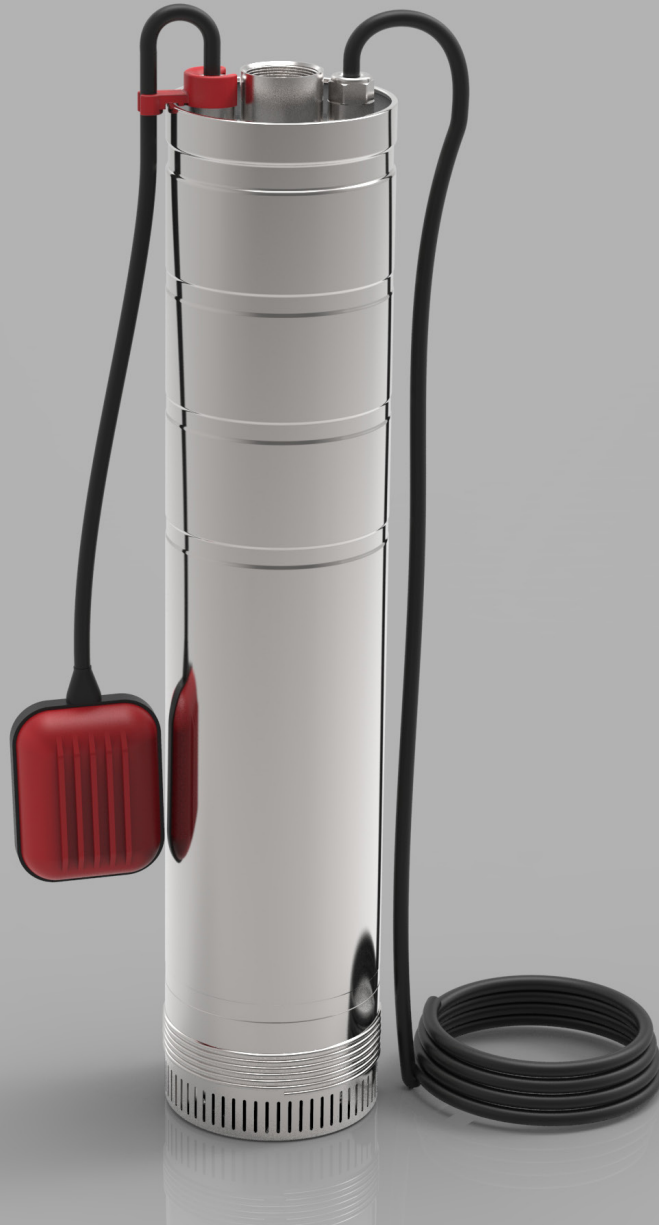


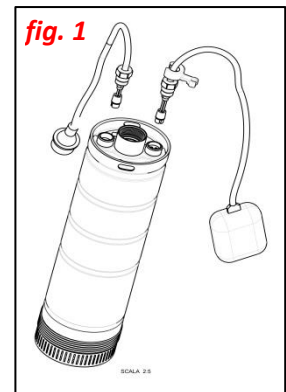
DIVERTECH



MANUAL DE DESMONTAJE
DISASSEMBLY MANUAL

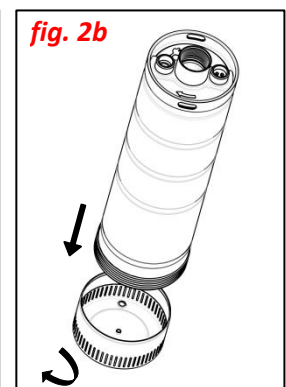
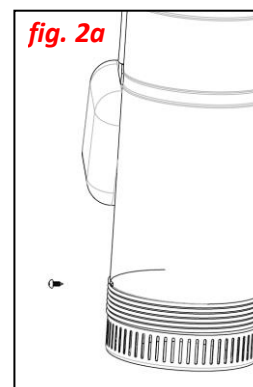
1. Desmontar el conector del cable de alimentacion y el conector del cable del interruptor de nivel (o el tapón) desenroscando en sentido anti horario (fig.1)

Remove connector of lead cable and connector of float switch (or jumper plug one) by unscrewing the locking ring nut counterclockwise (fig.1)



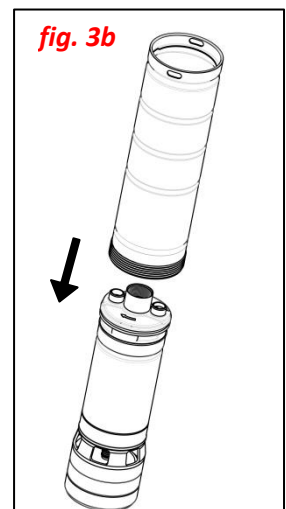
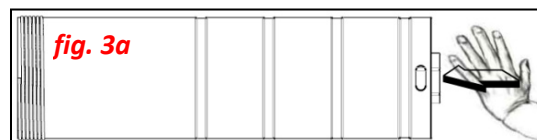
2. Desenroscar el tornillo de sujeción del filtro (fig.2a) y desenroscar en sentido antihorario el filtro de aspiracion (fig.2b)

Remove locking screw of suction filter (fig. 2a) and then unscrew suction filter counterclockwise (fig. 2b)



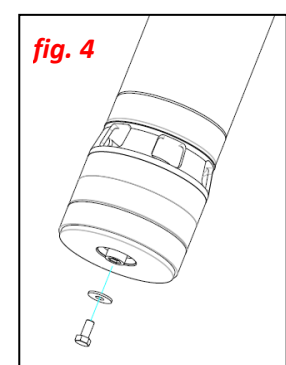
3. Aplicar presion sobre la boca de impulsión con la finalidad de extraer el cuerpo de la bomba de la camisa externa (fig.3a y fig.3b)

Apply a push on "flange-outlet" in order to extract pump body out of external sleeve (fig. 3a e fig. 3b)



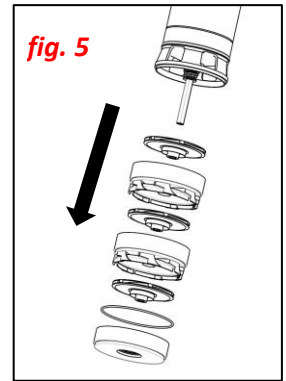
4. Extraer el tornillo de fijacion de las turbinas (fig.4)

Remove fastening screw of impellers (fig. 4)



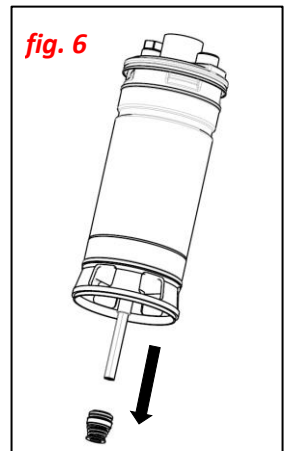
5. Extraer todas las turbinas y difusores del eje (fig.5)

Take all impellers and diffusers out of rotating shaft (fig. 5)



6. Desmontar la arandela de compresion y el sello rotante (fig.6)

Remove compression washer and rotating seal (fig. 6)

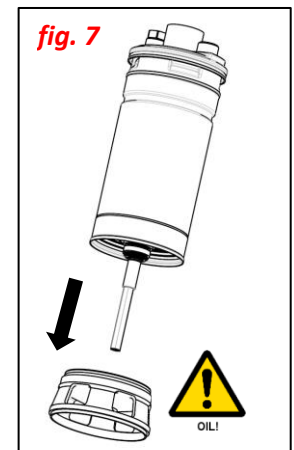


7. Desmontar el soporte de plastico (fig.7)

ATENCIÓN a la fuga de aceite

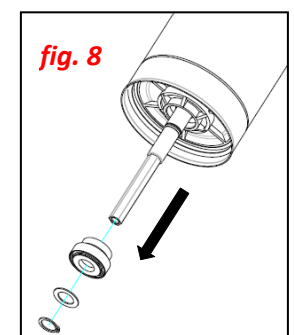
Remove plastic bracket (fig. 7).

WARNING: pay attention to oil outflows



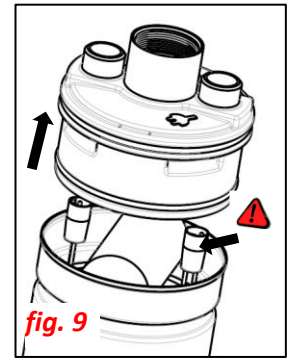
8. Desmontar el segger de seguridad, la arandela y el sello mecanico (fig.8)

Remove progressively seeger, washer and mechanical seal (fig. 8)



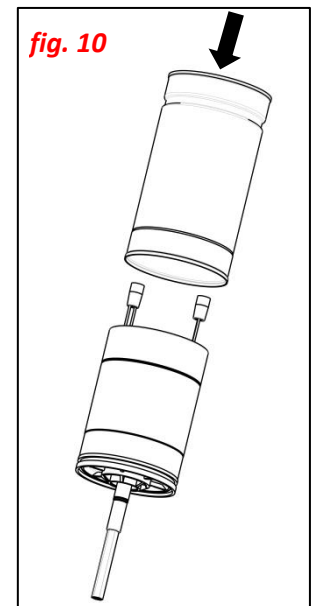
9. Desmonte suavemente la tapa de impulsión superior, prestando atención de no arrancar las conexiones internas de los cables (fig.9)

Lift delicately upper flange-outlet, by paying attention not to tear out internal lead cables (fig. 9)



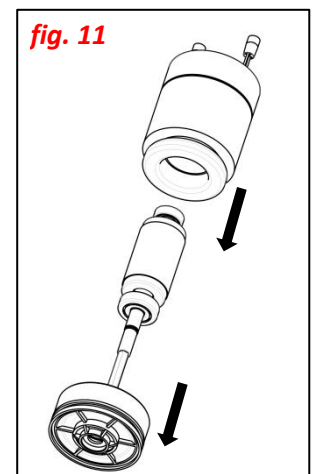
10. Para extraer el estator, el rotor con eje y el soporte en aluminio es necesario el uso de una prensa hidraulica presionando sobre el soporte superior de aluminio (fig.10)

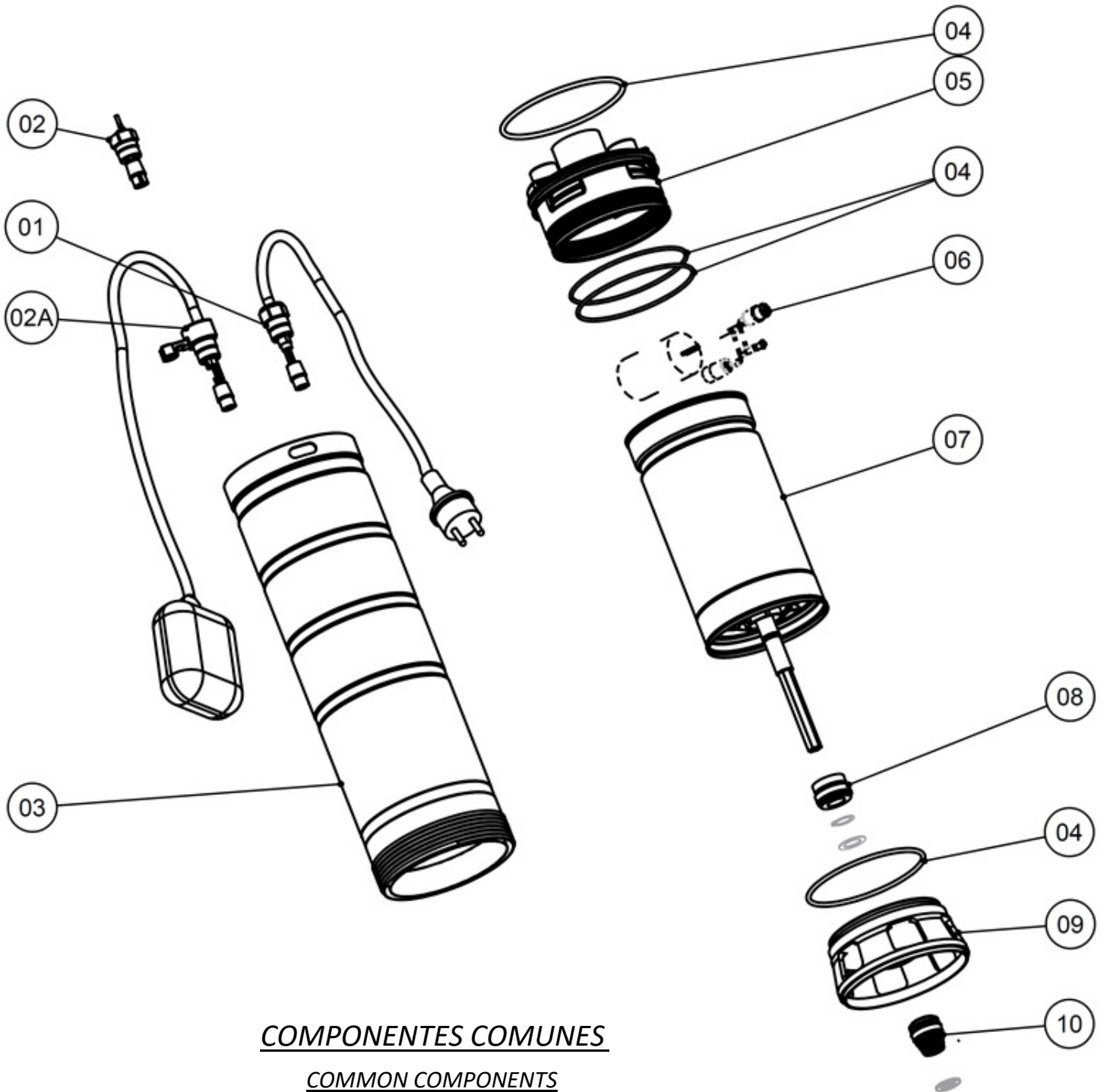
To extract the stator, motor shaft with rotor, and aluminum support it is necessary to act with a hydraulic press, pushing on the top aluminum support (fig. 10)



11. Si se desea, es posible extraer el soporte de aluminio y el eje motor con rotor (fig.11)

If you want, it's possible to extract the aluminum support and motor shaft with rotor (fig. 11)



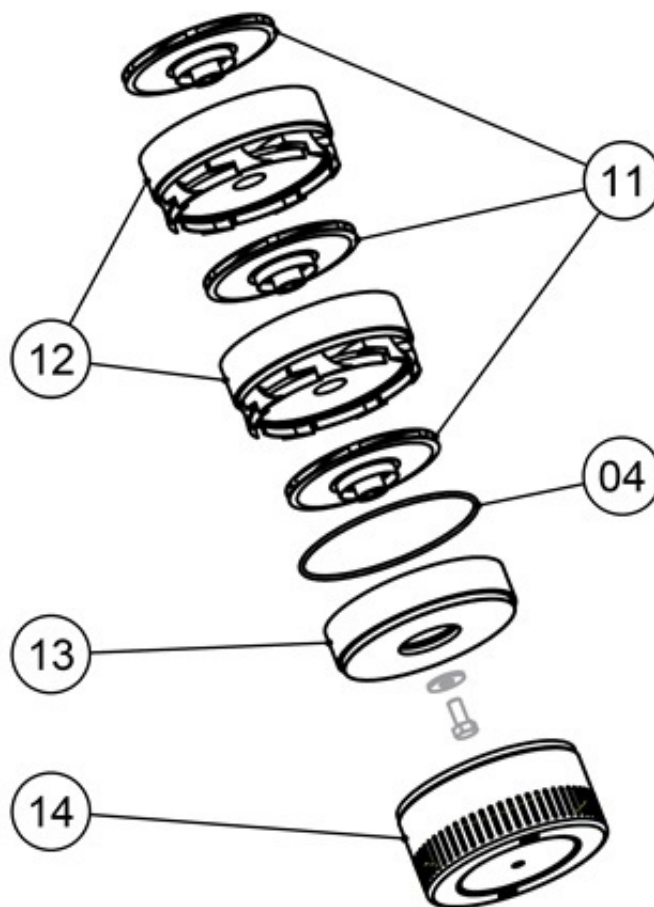


COMPONENTES COMUNES

COMMON COMPONENTS

POS.	DESCRIPCION	DESCRIPTION	Q.ty
01	Conector 5" H07RNF con 10 mts cable schuko	Connector 5" H07RNF with schuko	1
02	Conector tapon	Jumper plug	1
02A	Interruptor de nivel	Float switch	1
03	Camisa externa	External sleeve	1
04	Kit Juntas toricas	Kit O-ring	1
05	Cuerpo Impulsion	Delivery	1
06	Condensador externo para bomba monofasica (mirar valor en cada modelo)	External capacitor for single-phase pump (check value on each type)	1
07	Kit motor completo: Incluye estator, rotor, rodamientos, ... Rodamiento superior: 6202 ZZ Rodamiento inferior: 6303 ZZ	Complete Motor Kit: Includes stator, rotor, bearings, ... Upper bearing: 6202 ZZ Lower bearing: 6303 ZZ	1
08	Sello mecanico STA	Mechanical seal STA	1
09	Soporte hidraulica	Hydraulic support	1
10	Sello mecanico ST3	Mechanical seal ST3	1

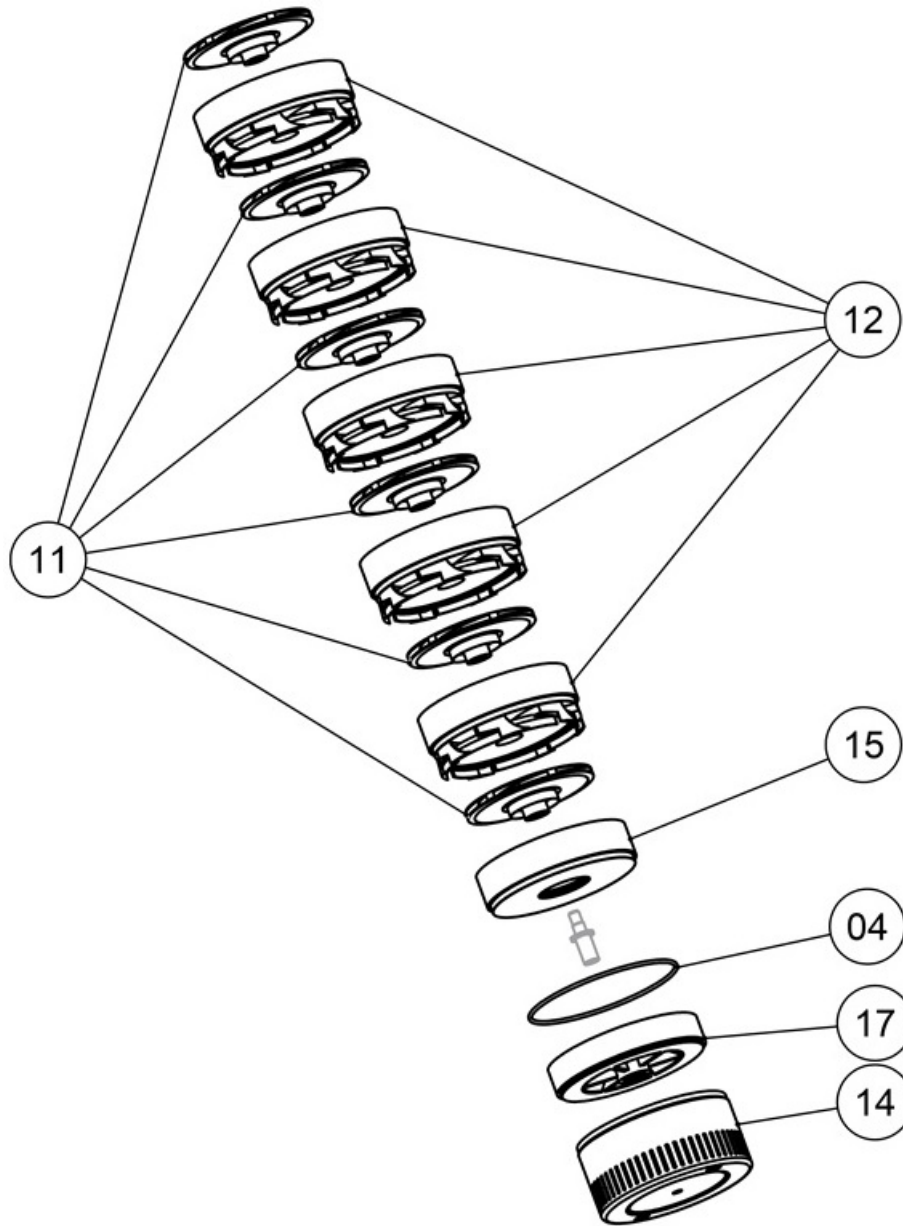
DIVERTECH 63 - DIVERTECH 103



DIVERTECH 63			
POS.	DESCRIPCION	DESCRIPTION	Q.ty
04	Kit Juntas Toricas	Kit O-ring	1
06	Condensador Externo para bomba monofasica (20 uF)	External Capacitor for single-phase pump (20 uF)	1
11	Turbina	Impeller	3
12	Cuerpo difusor	Diffuser box	2
13	Cuerpo difusor con alojamiento O-ring	Diffuser box with O-ring seat	1
14	Filtro aspiracion	Suction filter	1

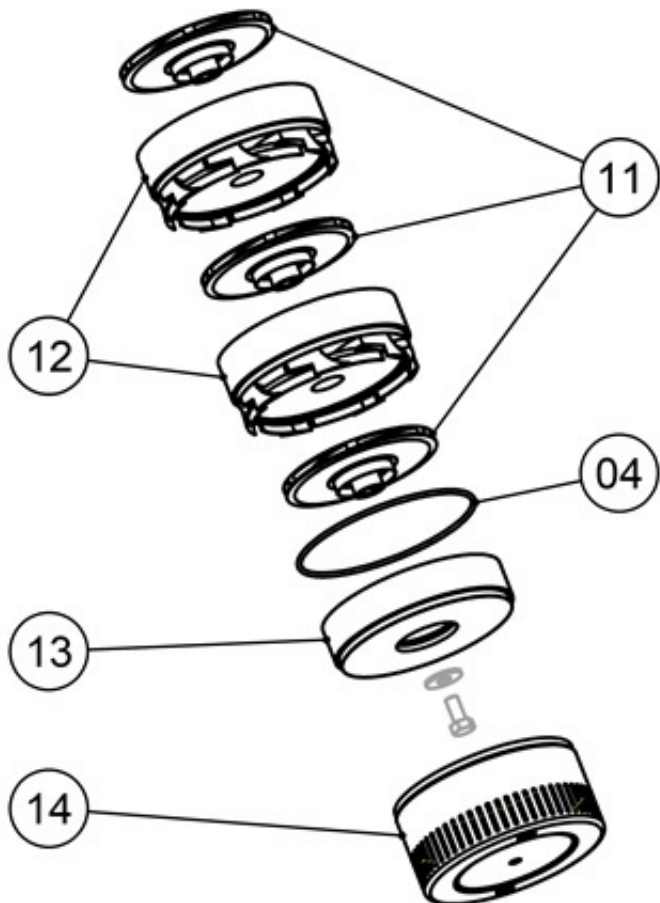
DIVERTECH 103			
POS.	DESCRIPCION	DESCRIPTION	Q.ty
04	Kit Juntas Toricas	Kit O-ring	1
06	Condensador Externo para bomba monofasica (25 uF)	External Capacitor for single-phase pump (25 uF)	1
11	Turbina	Impeller	5
12	Cuerpo difusor	Diffuser box	4
13	Cuerpo difusor con alojamiento O-ring	Diffuser box with O-ring seat	1
14	Filtro aspiracion	Suction filter	1

DIVERTECH 153

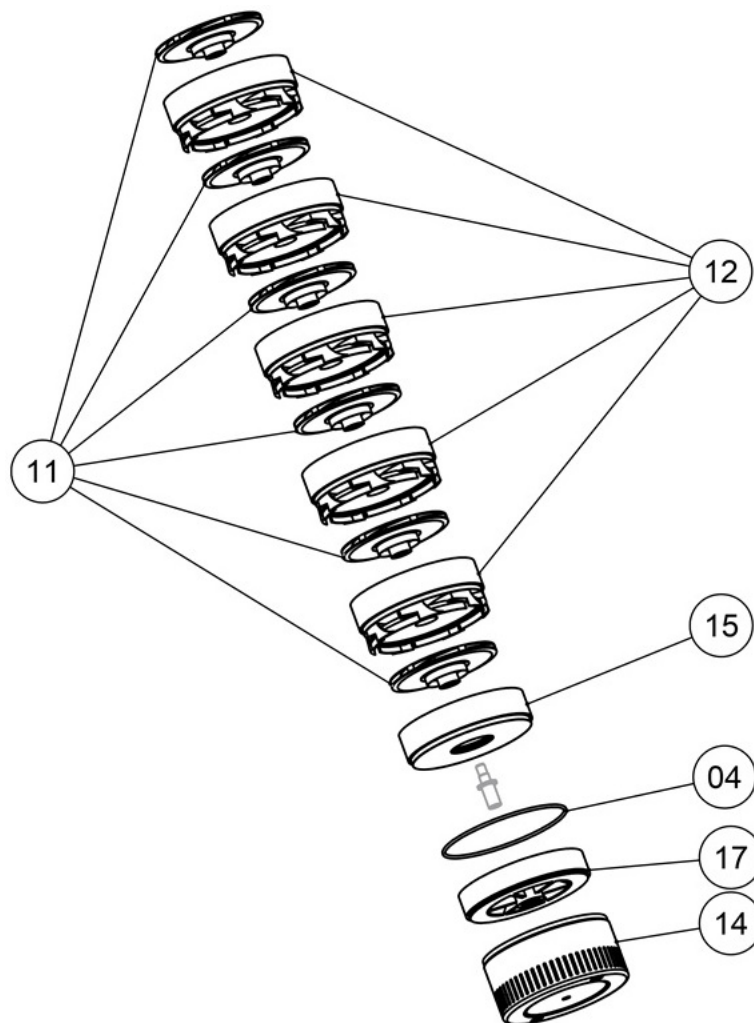


DIVERTECH 153			
POS.	DESCRIPCION	DESCRIPTION	Q.ty
04	Kit Juntas Toricas	Kit O-ring	1
06	Condensador Externo para bomba monofasica (35 uF)	External Capacitor for single-phase pump (35 uF)	1
11	Turbina	Impeller	7
12	Cuerpo difusor	Diffuser box	6
14	Filtro aspiracion	Suction filter	1
15	Cuerpo difusor inferior	Lower Diffuser box	1
17	Soporte inferior de alineacion	Alignment flange	1

DIVERTECH HF 154



DIVERTECH HF 204



DIVERTECH HF 154			
POS.	DESCRIPCION	DESCRIPTION	Q.ty
04	Kit Juntas Toricas	Kit O-ring	1
06	Condensador Externo para bomba monofasica (35 uF)	External Capacitor for single-phase pump (35 uF)	1
11	Turbina	Impeller	5
12	Cuerpo difusor	Diffuser box	4
13	Cuerpo difusor con alojamiento O-ring	Diffuser box with O-ring seat	1
14	Filtro aspiracion	Suction filter	1

DIVERTECH HF 204			
POS.	DESCRIPCION	DESCRIPTION	Q.ty
04	Kit Juntas Toricas	Kit O-ring	1
06	Condensador Externo para bomba monofasica (40 uF)	External Capacitor for single-phase pump (40 uF)	1
11	Turbina	Impeller	6
12	Cuerpo difusor	Diffuser box	5
14	Filtro aspiracion	Suction filter	1
15	Cuerpo difusor inferior	Lower Diffuser box	1
17	Soporte inferior de alineacion	Alignment flange	1