

Serie 7F	Pompa tipo - Pump type G271M3V1-K50AA6 G271M3V1-K50AA6	Curva - Curve V707-205
--------------------	---	----------------------------------

Cod. Code 7002815	Peso totale Total weight 40 Kg	Materiale Construction GHISA EN-GJL-250 CAST IRON EN-GJL-250	Girante Impeller VORTEX VORTEX
-----------------------------	--	--	--------------------------------------

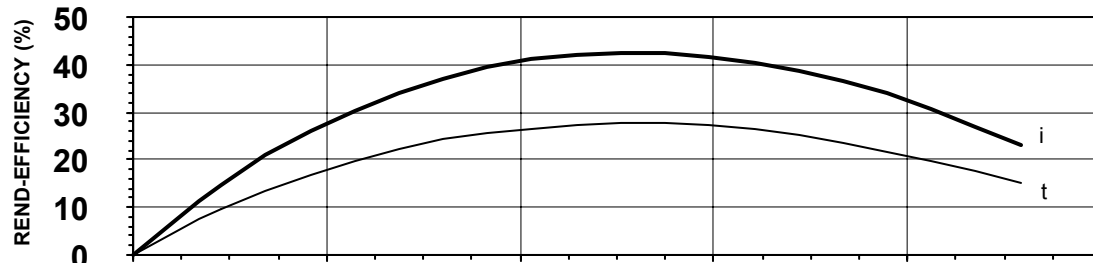
Idraulica - Hydraulic	
MANDATA DISCHARGE	50 mm
ASPIRAZIONE SUCTION	55 mm
PASSAGGIO LIBERO FREE PASSAGE	50 mm
DIAMETRO GIRANTE IMPELLER DIAMETER	135 mm
RENDIMENTO IDRAULICO HYDRAULIC EFFICIENCY	42.6 %

Motore - Motor	
TENSIONE NOMINALE NOMINAL VOLTAGE	1ph 230V-50Hz
CLASSE DI ISOLAMENTO WINDING INSULATION CLASS	F
VELOCITA' NOMINALE NOMINAL SPEED	2850 r p m
TIPO MOTORE MOTOR TYPE	M271M/M Eex - 07341
POTENZA MAX ASSORBITA DALLA RETE P1 MAX ABSORBED POWER FROM MAINS P1	1.4 kW
POTENZA MAX IDRAULICA P2 MAX HYDRAULIC POWER P2	0.9 kW
FATTORE DI POTENZA (4/4) POWER FACTOR (4/4)	0.94 COS φ
CORRENTE DI SPUNTO STARTING CURRENT	22.8 A
CORRENTE MAX ASSORBITA MAX ABSORBED CURRENT	6.5 A

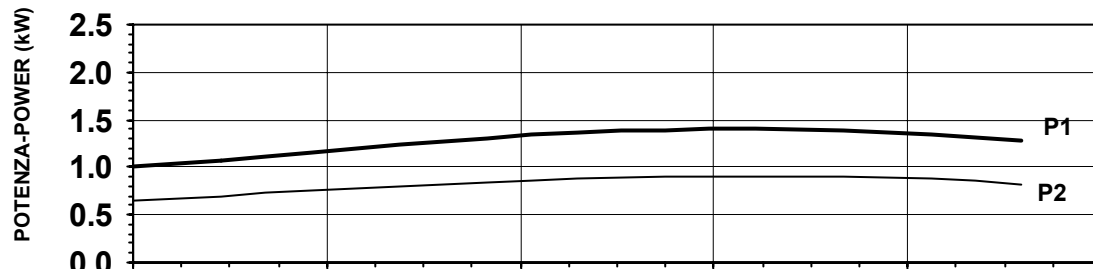
Impiego - Application	
TEMP. MAX. DEL LIQUIDO PUMPED LIQUID MAX TEMP.	45 °C
DENSITA' MAX. DEL LIQUIDO PUMPED LIQUID MAXIMUM DENSITY	1.2 Kg/dm³
PROTEZIONE MECCANICA MECHANICAL PROT. DEGREE	IP 68
CAVO CABLE	4G1,5 H07RNF

Protezioni - Protections	
PROTEZIONE TERMICA THERMAL CONTROL	<input type="checkbox"/> YES
CONTROLLO INFILTRAZIONE HUMIDITY PROBE	<input type="checkbox"/> NO
EEx d IIB T4	<input type="checkbox"/> YES
MANTELLO DI RAFFREDDAMENTO COOLING JACKET	<input type="checkbox"/> NO

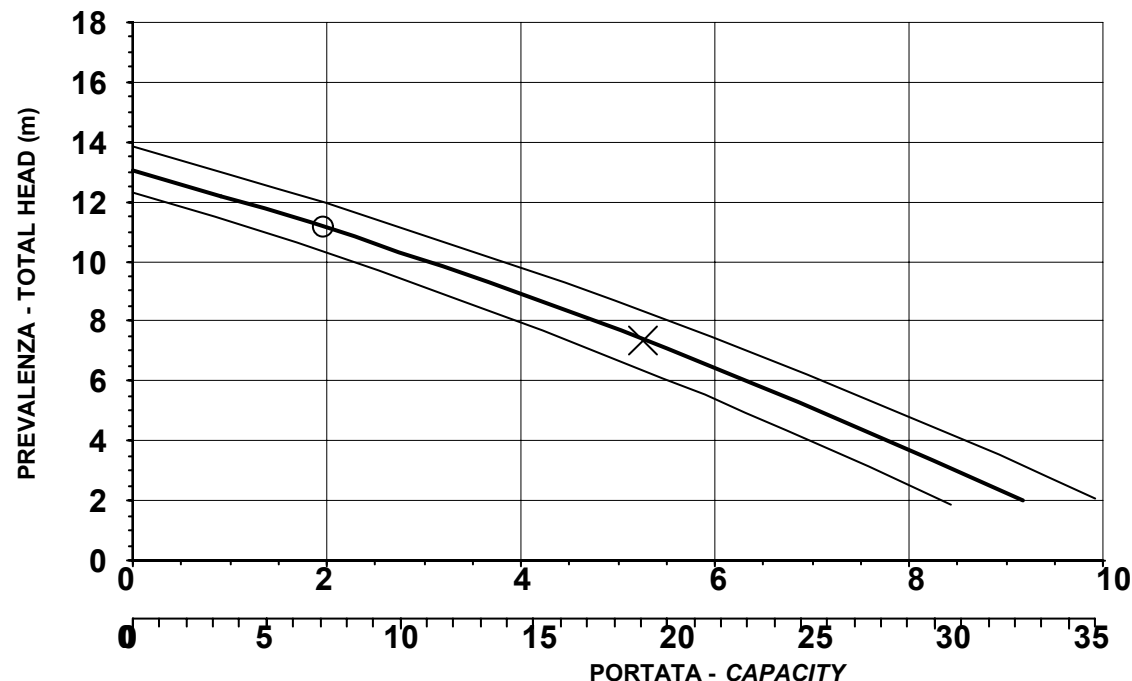
Rend. max- Best efficiency	
RENDIMENTO TOTALE TOTAL EFFICIENCY	27.7 %
POT. MAX ASS. DALLA RETE P1 MAX ABS. POWER FROM MAIN P1	1.4 kW
PREVALENZA HEAD	7.3 m
PORTATA CAPACITY	19.0 m³/h



η_i = Rendimento idraulico
 η_i = Hydraulic efficiency
 η_t = Rendimento totale
 η_t = Total efficiency



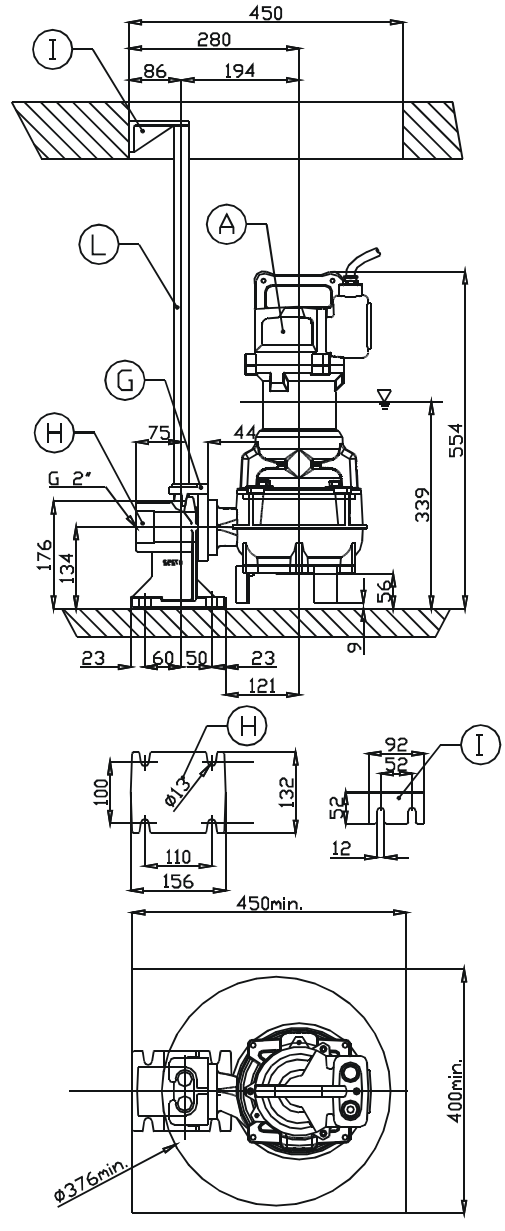
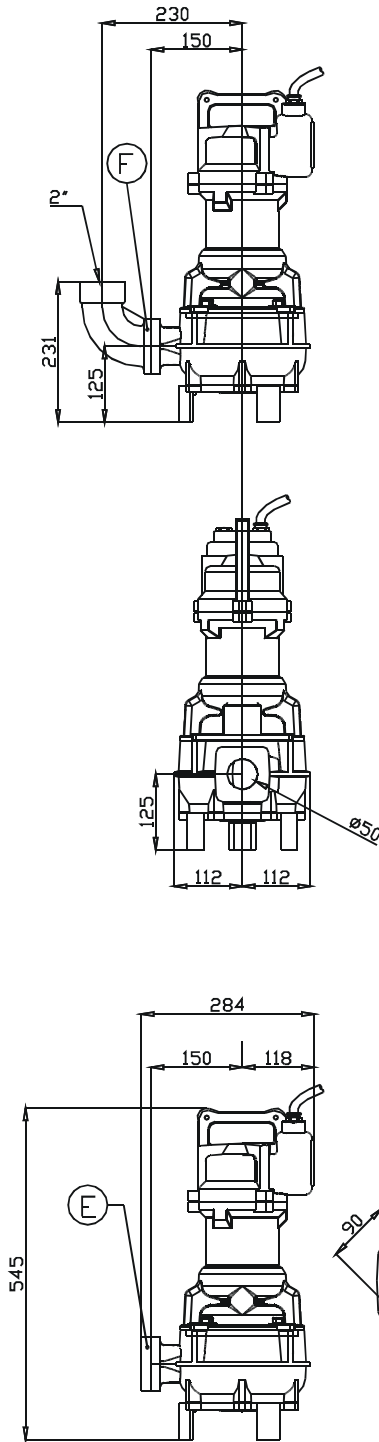
P1 = Potenza ass. dalla rete
P1 = Abs. power from mains
P2 = Potenza max idraulica
P2 = Max hydraulic power



○ = Rischio di sedimentazione
 Sedimentation risk
 X = Punto max. rendimento
 Best efficiency point

l/s
 m³/h

CURVA CARATTERISTICA SECONDO NORME UNI ISO 9906 PERFORMANCE CURVES IN ACCORDANCE TO UNI ISO 9906	PRESTAZIONI RILEVATE CON ACQUA PURA A 20 °C OPERATING DATA OBTAINED WITH CLEAN WATER AT 20 °C
---	--



▽ LIVELLO MINIMO DI
SOMMERSIBILITA'
▽ MINIMUM
SUBMERSIBLE LEVEL

S

Pos. Pos.	Codice Code	Descrizione Description	Materiale Material	Peso Kg Weight
A	-	Elettropompa Sommersibile Submersible Pump	G250 Ghisa G250 Cast-Iron	
B	6409310	Guarnizione DN50 Rubber joint DN50	Neoprene Neoprene	
TYPE: R GPADN502T				
G	GCADN50	Controflangia accoppiamento 2 guide DN50 Double guide rail coupling flange DN50	G250 Ghisa G250 Cast-Iron	1.2
H	GBPACDN502T	Piede d'accoppiamento 2 guide DN50 Double guide coupling feet DN50	G250 Ghisa G250 Cast-Iron	5.6
I	SOP2TDN50	Sopporto tubi superiore 2 guide 3/4 Double guide rail upper support 3/4	G250 Ghisa G250 Cast-Iron	1.1
L	TUBO 3/4	Tubo guida 3/4 Guide rail 3/4	Acciaio zincato Galvanized Steel	
TYPE: S				
E	GF2	Flangetta filettata 2" Threaded flange 2"	G250 Ghisa G250 Cast-Iron	0.7
F	GCF2	Curva filettata 90° 2" Threaded elbow 90° 2"	G250 Ghisa G250 Cast-Iron	2.5

Serie 7F	Pompa tipo - Pump type G271T3V1-K50AA6 G271T3V1-K50AA6	Curva - Curve V707-205
--------------------	---	----------------------------------

Cod. Code 7009088	Peso totale Total weight 40 Kg	Materiale Construction GHISA EN-GJL-250 CAST IRON EN-GJL-250	Girante Impeller VORTEX VORTEX
-----------------------------	--	--	--------------------------------------

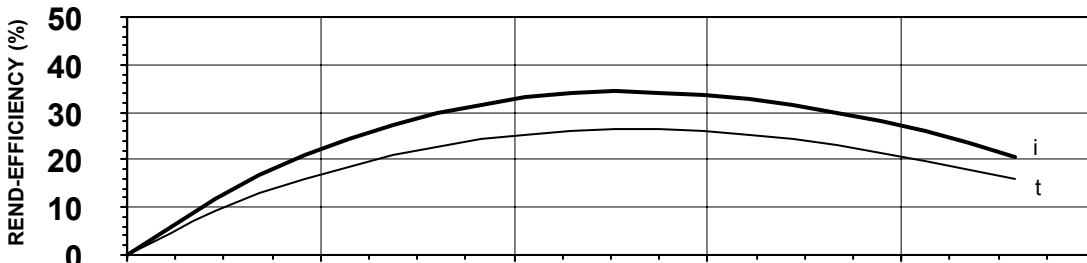
Idraulica - Hydraulic	
MANDATA DISCHARGE	50 mm
ASPIRAZIONE SUCTION	55 mm
PASSAGGIO LIBERO FREE PASSAGE	50 mm
DIAMETRO GIRANTE IMPELLER DIAMETER	135 mm
RENDIMENTO IDRAULICO HYDRAULIC EFFICIENCY	34.2 %

Motore - Motor	
TENSIONE NOMINALE NOMINAL VOLTAGE	3ph 400V-50Hz
CLASSE DI ISOLAMENTO WINDING INSULATION CLASS	F
VELOCITA' NOMINALE NOMINAL SPEED	2850 r p m
TIPO MOTORE MOTOR TYPE	M271T/M Eex - 07456
POTENZA MAX ASSORBITA DALLA RETE P1 MAX ABSORBED POWER FROM MAINS P1	1.5 kW
POTENZA MAX IDRAULICA P2 MAX HYDRAULIC POWER P2	1.2 kW
FATTORE DI POTENZA (4/4) POWER FACTOR (4/4)	0.75 COS φ
CORRENTE DI SPUNTO STARTING CURRENT	12.2 A
CORRENTE MAX ASSORBITA MAX ABSORBED CURRENT	2.9 A

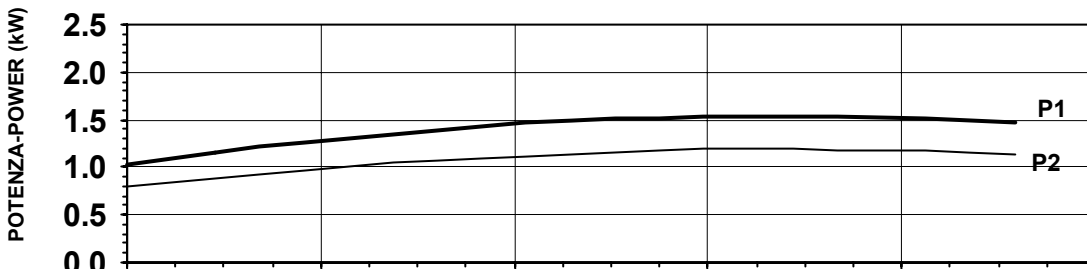
Impiego - Application	
TEMP. MAX. DEL LIQUIDO PUMPED LIQUID MAX TEMP.	45 °C
DENSITA' MAX. DEL LIQUIDO PUMPED LIQUID MAXIMUM DENSITY	1.2 Kg/dm³
PROTEZIONE MECCANICA MECHANICAL PROT. DEGREE	IP 68
CAVO CABLE	2X4G1,5 H07RNF

Protezioni - Protections	
PROTEZIONE TERMICA THERMAL CONTROL	<input type="checkbox"/> YES
CONTROLLO INFILTRAZIONE HUMIDITY PROBE	<input type="checkbox"/> NO
EEx d IIB T4	<input type="checkbox"/> YES
MANTELLO DI RAFFREDDAMENTO COOLING JACKET	<input type="checkbox"/> NO

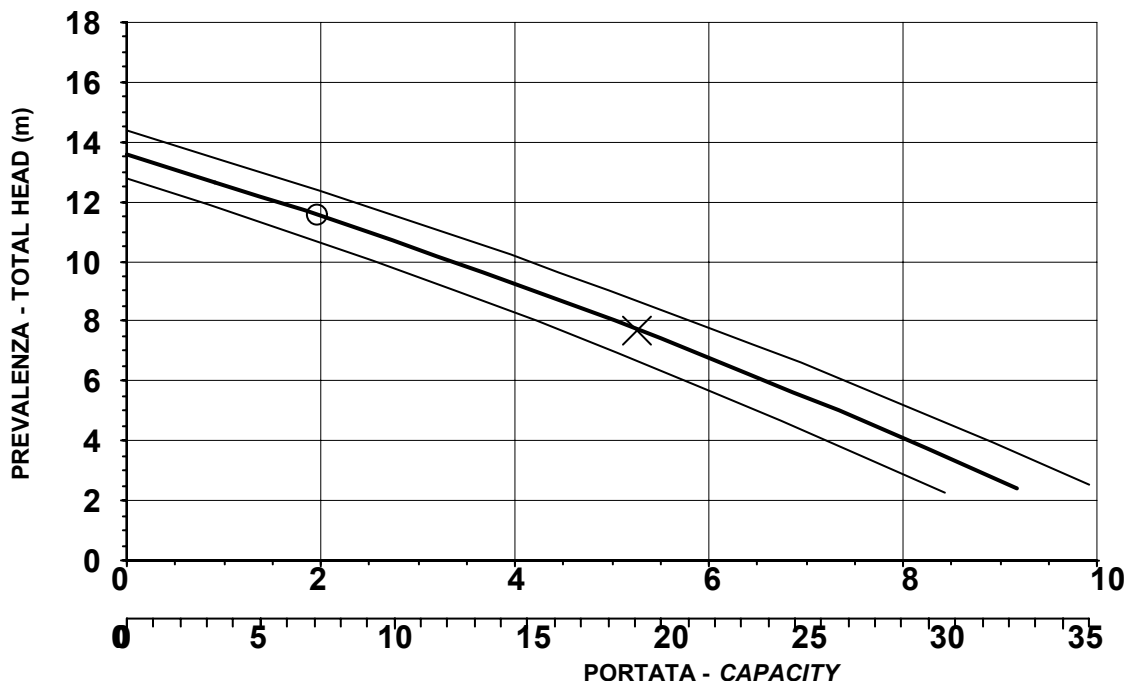
Rend. max- Best efficiency	
RENDIMENTO TOTALE TOTAL EFFICIENCY	26.4 %
POT. MAX ASS. DALLA RETE P1 MAX ABS. POWER FROM MAIN P1	1.5 kW
PREVALENZA HEAD	7.7 m
PORTATA CAPACITY	19.0 m³/h



η_i = Rendimento idraulico
 η_i = Hydraulic efficiency
 η_t = Rendimento totale
 η_t = Total efficiency



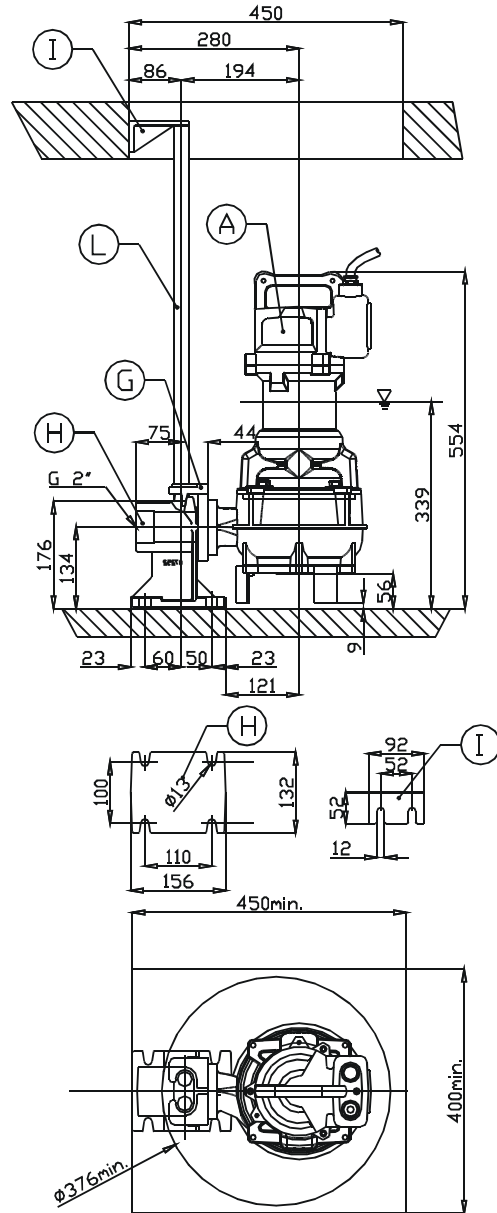
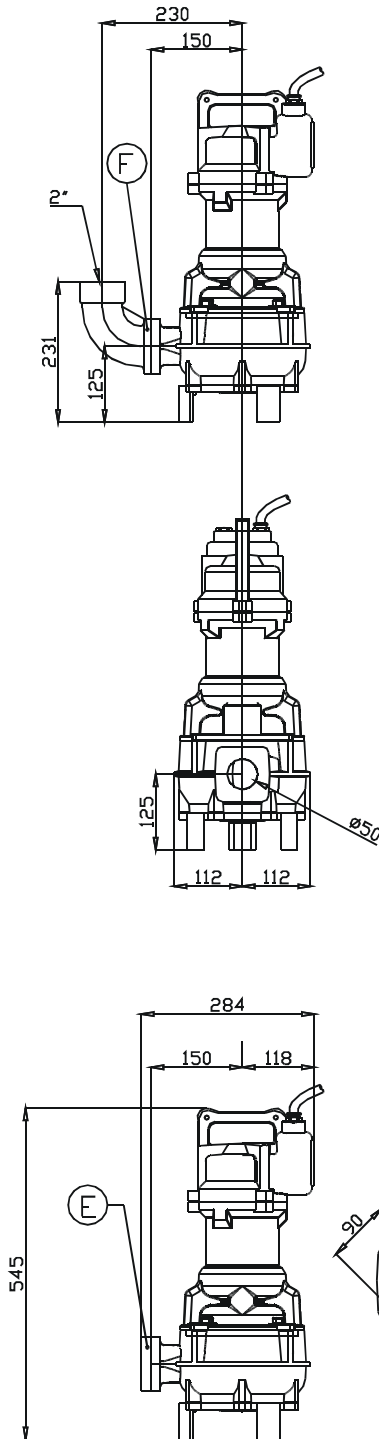
P1 = Potenza ass. dalla rete
P1 = Abs. power from mains
P2 = Potenza max idraulica
P2 = Max hydraulic power



○ = Rischio di sedimentazione
Sedimentation risk
X = Punto max. rendimento
Best efficiency point

l/s
m³/h

CURVA CARATTERISTICA SECONDO NORME UNI ISO 9906 PERFORMANCE CURVES IN ACCORDANCE TO UNI ISO 9906	PRESTAZIONI RILEVATE CON ACQUA PURA A 20 °C OPERATING DATA OBTAINED WITH CLEAN WATER AT 20 °C
---	--



▽ LIVELLO MINIMO DI
SOMMERSIBILITA'
▽ MINIMUM
SUBMERSIBLE LEVEL

S

Pos. Pos.	Codice Code	Descrizione Description	Materiale Material	Peso Kg Weight
A	-	Elettropompa Sommersibile Submersible Pump	G250 Ghisa G250 Cast-Iron	
B	6409310	Guarnizione DN50 Rubber joint DN50	Neoprene Neoprene	
TYPE: R GPADN502T				
G	GCADN50	Controflangia accoppiamento 2 guide DN50 Double guide rail coupling flange DN50	G250 Ghisa G250 Cast-Iron	1.2
H	GBPACDN502T	Piede d'accoppiamento 2 guide DN50 Double guide coupling feet DN50	G250 Ghisa G250 Cast-Iron	5.6
I	SOP2TDN50	Sopporto tubi superiore 2 guide 3/4 Double guide rail upper support 3/4	G250 Ghisa G250 Cast-Iron	1.1
L	TUBO 3/4	Tubo guida 3/4 Guide rail 3/4	Acciaio zincato Galvanized Steel	
TYPE: S				
E	GF2	Flangetta filettata 2" Threaded flange 2"	G250 Ghisa G250 Cast-Iron	0.7
F	GCF2	Curva filettata 90° 2" Threaded elbow 90° 2"	G250 Ghisa G250 Cast-Iron	2.5